



KEY

Site boundary

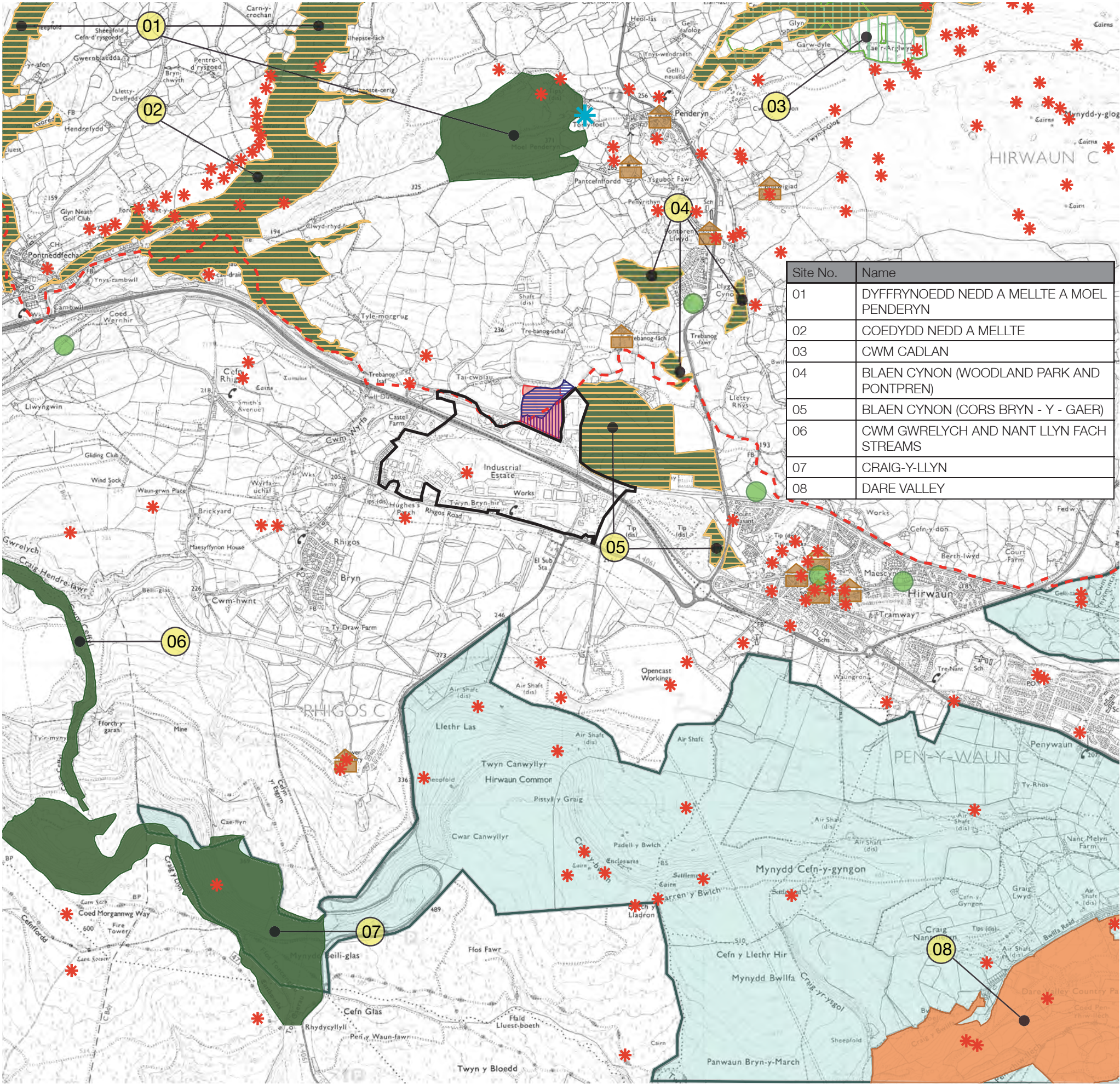
NOTE:- Reproduced from the Ordnance Survey Map with the permission of the Controller of H.M Stationary Office©Crown copyright license number 100024244 Savills (L&P) Limited. Published for the purposes of identification only and although believed to be correct accuracy is not guaranteed.  
Copyright Savills (L&P) Limited. No dimensions are to be scaled from this drawing.

Figure 12.1:  
Site Location and  
Context



date	October 2008
scale	NTS
reference	W/PL 142427





Site No.	Name
01	DYFFRYNOEDD NEDD A MELLTE A MOEL PENDERYN
02	COEDYDD NEDD A MELLTE
03	CWM CADLAN
04	BLAEN CYNON (WOODLAND PARK AND PONTPREN)
05	BLAEN CYNON (CORS BRYN - Y - GAER)
06	CWM GWRELYCH AND NANT LLYN FACH STREAMS
07	CRAIG-Y-LLYN
08	DARE VALLEY

KEY



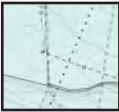
Site of Special Scientific Interest



Country Park



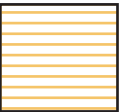
Area of Archaeological evaluation



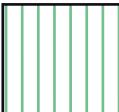
Local Landscape Area (RCT [Cynon Valley] local plan policy ENVP1)



Employment Allocation (BBNP UDPP Policy SS4, UDPP Policy SS4)



Special Area of Conservation



National Nature Reserve



Listed Building



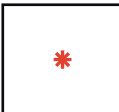
Hirwaun Industrial Estate



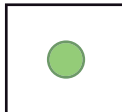
Site boundary



Brecon Beacons National Park boundary



National Monuments of Wales



Tree Preservation Order



Industrial and Business Development (RCT [Cynon Valley] local plan policy BP3A)

NOTE:- Reproduced from the Ordnance Survey Map with the permission of the Controller of H.M Stationary Office©Crown copyright license number 100024244 Savills (L&P) Limited. Published for the purposes of identification only and although believed to be correct accuracy is not guaranteed.

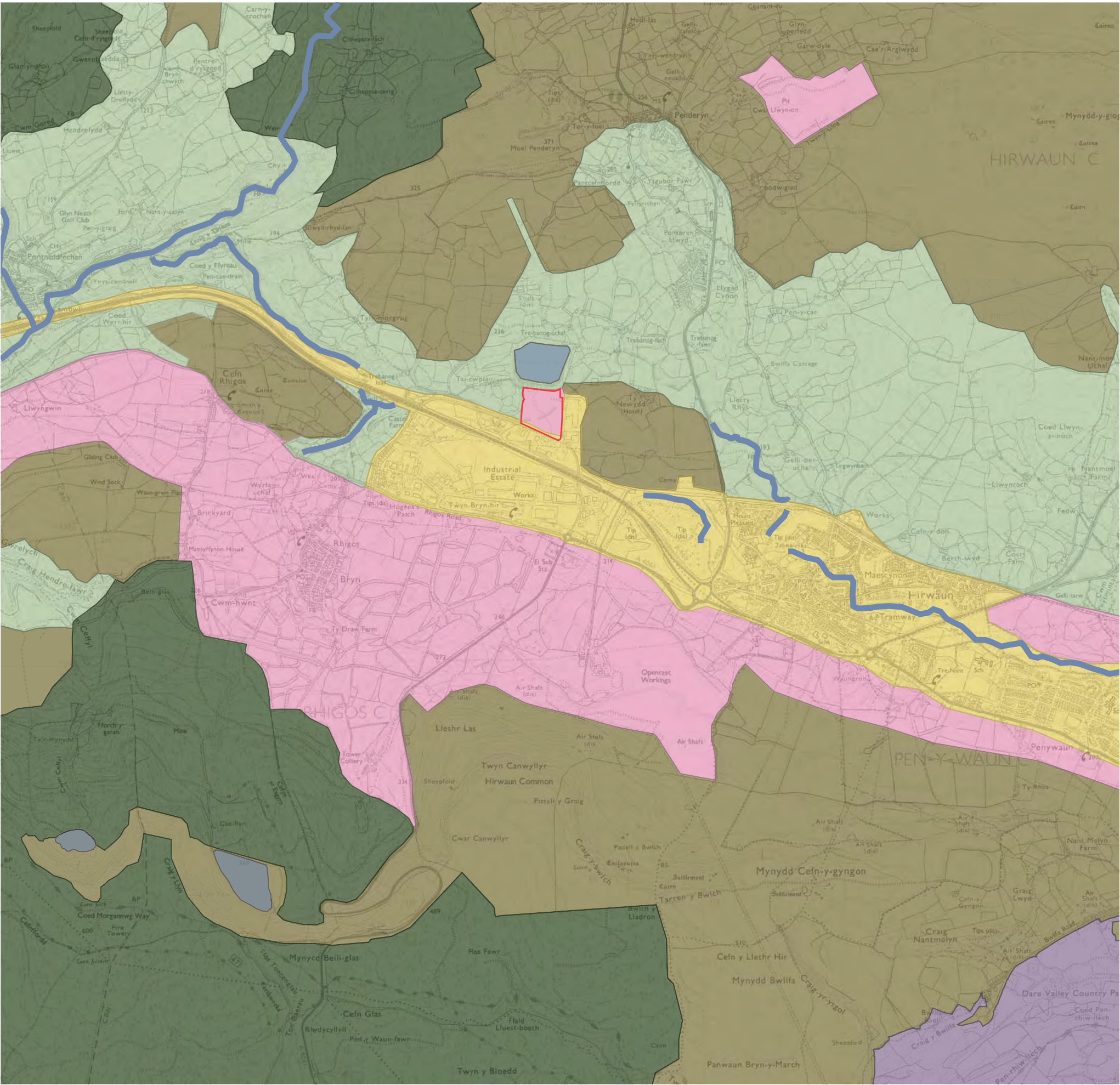
Copyright Savills (L&P) Limited. No dimensions are to be scaled from this drawing.

Figure 12.2:  
Landscape Related  
Designations

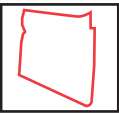


date	October 2008
scale	NTS
reference	WPL 142427





KEY



Site boundary



Urbanized valley



Lower valley slopes with urban and industrial influences



Wooded countryside with scattered settlement



Open countryside



Plantation and mixed forest



Country Park



Main water bodies



Main water courses

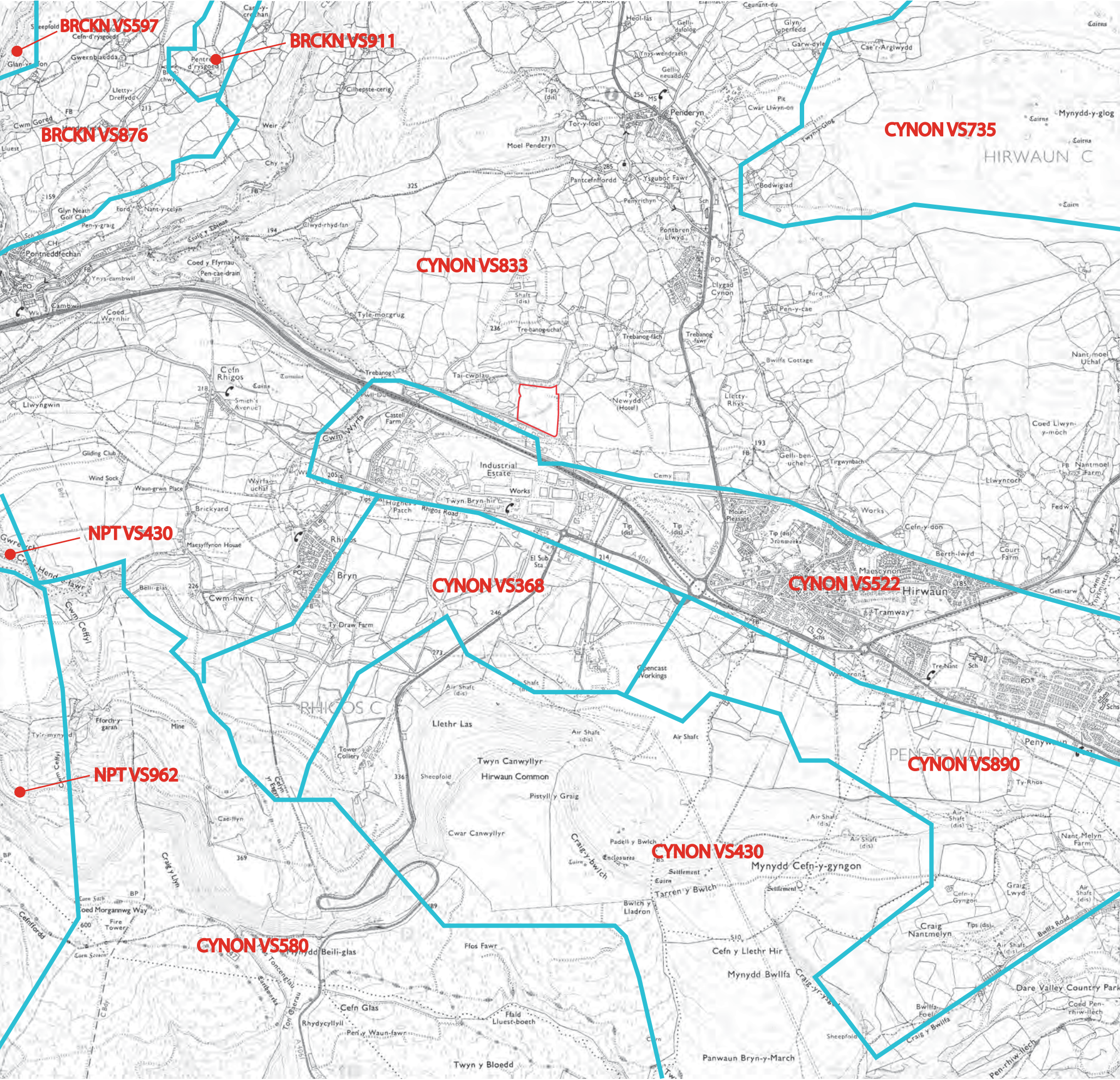
NOTE:- Reproduced from the Ordnance Survey Map with the permission of the Controller of H.M Stationary Office © Crown copyright license number 100024244 Savills (L&P) Limited. Published for the purposes of identification only and although believed to be correct accuracy is not guaranteed. Copyright Savills (L&P) Limited. No dimensions are to be scaled from this drawing.




Figure 12.3:  
Landscape Character  
Areas



date	October 2008
scale	NTS
reference	W/PL 142427





KEY		
	Site boundary	CYNON - Bridgend/ Caerphilly/ Rhondda Cynon Taf BRCKN - Brecknockshire NPT - Neath, Port Talbot
	Approximate boundary of visual and sensory aspect area	Cynon VS735 - Cadair Fawr Cynon VS833 - Penderyn Cynon VS522 - Aberdare Cynon VS368 - Opencast Cynon VS430 - Hirwaun Common Cynon VS580 - St Gwynno Cynon VS890 - Craigr Nantmelyn
	CCW Landmap visual and sensory aspect area code	BRCKN VS876 - Nedd Fechan and Mellte Valleys BRCKN VS911 - gwaun Hepste BRCKN VS597 - Coed-y-Rhaiadr NPT VS430 - Gelliceibryn/ Pont Walby NPT VS962 - Mynydd Nant y bar/ Mynydd Blaenafan

NOTE:- Reproduced from the Ordnance Survey Map with the permission of the Controller of H.M Stationary Office © Crown copyright license number 100024244 Savills (L&P) Limited. Published for the purposes of identification only and although believed to be correct accuracy is not guaranteed. Copyright Savills (L&P) Limited. No dimensions are to be scaled from this drawing.