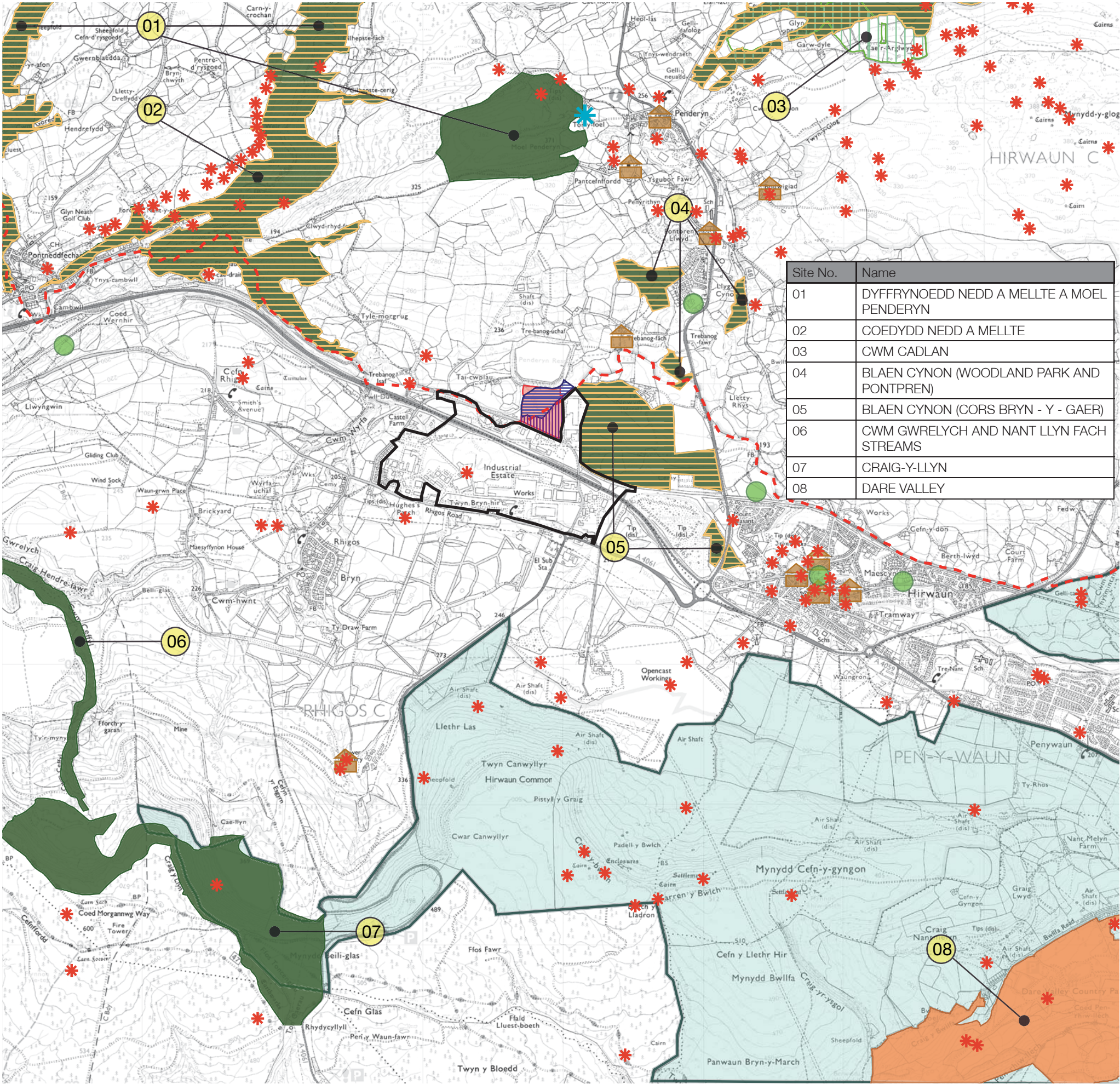




KEY

Site boundary

NOTE:- Reproduced from the Ordnance Survey Map with the permission of the Controller of H.M Stationary Office © Crown copyright license number 100024244 Savills (L&P) Limited. Published for the purposes of identification only and although believed to be correct accuracy is not guaranteed. Copyright Savills (L&P) Limited. No dimensions are to be scaled from this drawing.



KEY



Site of Special Scientific Interest



Country Park



Area of Archaeological evaluation



Local Landscape Area (RCT [Cynon Valley] local plan policy ENVP1)



Employment Allocation (BBNP UDPP Policy SS4,



Special Area of Conservation



National Nature Reserve



Listed Building



Hirwaun Industrial Estate



Site boundary



Brecon Beacons National Park boundary



National Monuments of Wales



Tree Preservation Order



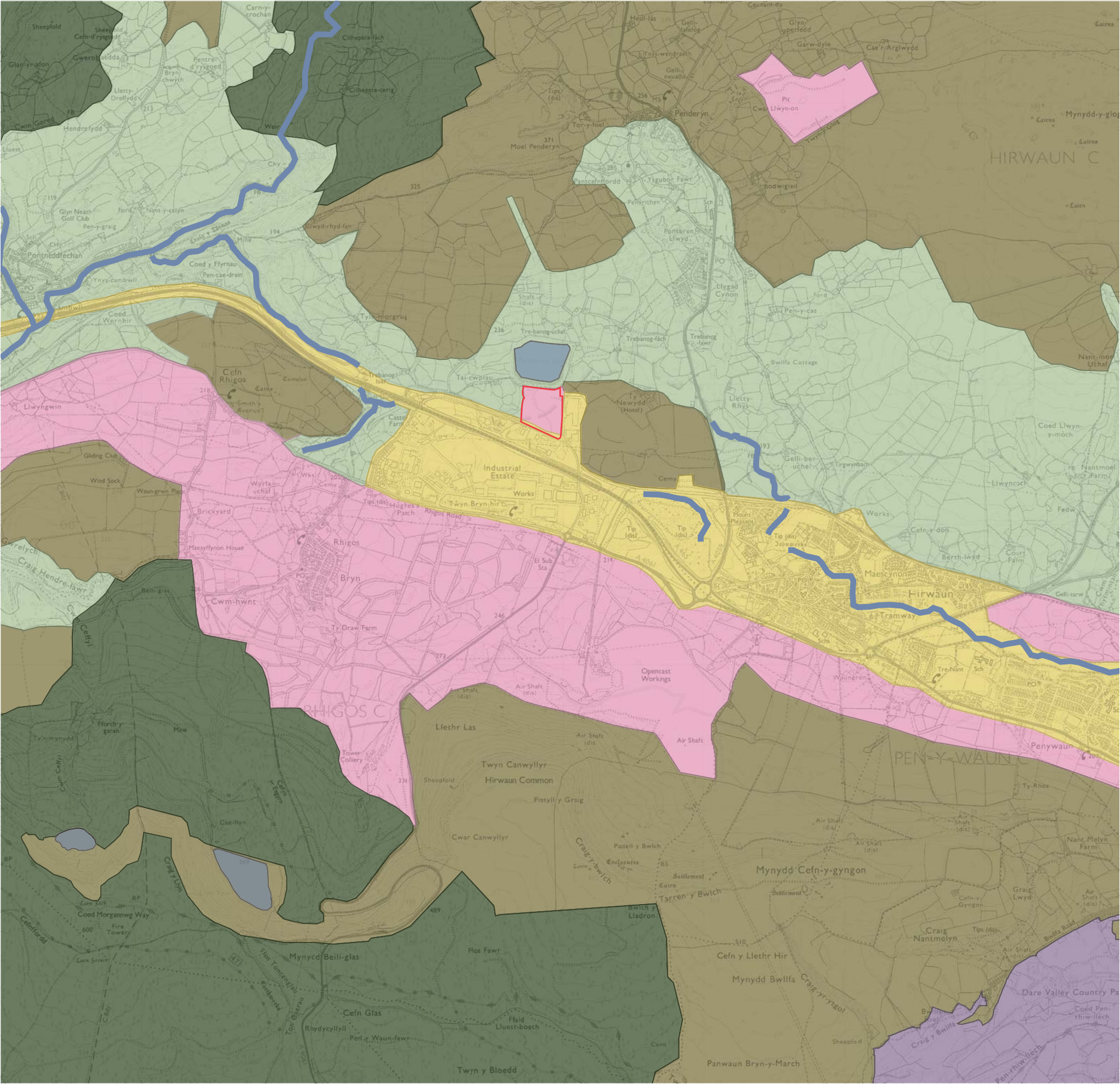
Industrial and Business Development (RCT [Cynon Valley] local plan policy BP3A)

NOTE:- Reproduced from the Ordnance Survey Map with the permission of the Controller of H.M Stationary Office © Crown copyright license number 100024244 Savills (L&P) Limited. Published for the purposes of identification only and although believed to be correct accuracy is not guaranteed. Copyright Savills (L&P) Limited. No dimensions are to be scaled from this drawing.

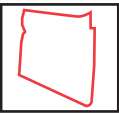
Figure 12.2:
Landscape Related
Designations



date	October 2008
scale	NTS
reference	WfPL 142427



KEY



Site boundary



Urbanized valley



Lower valley slopes with urban and industrial influences



Wooded countryside with scattered settlement



Open countryside



Plantation and mixed forest



Country Park



Main water bodies



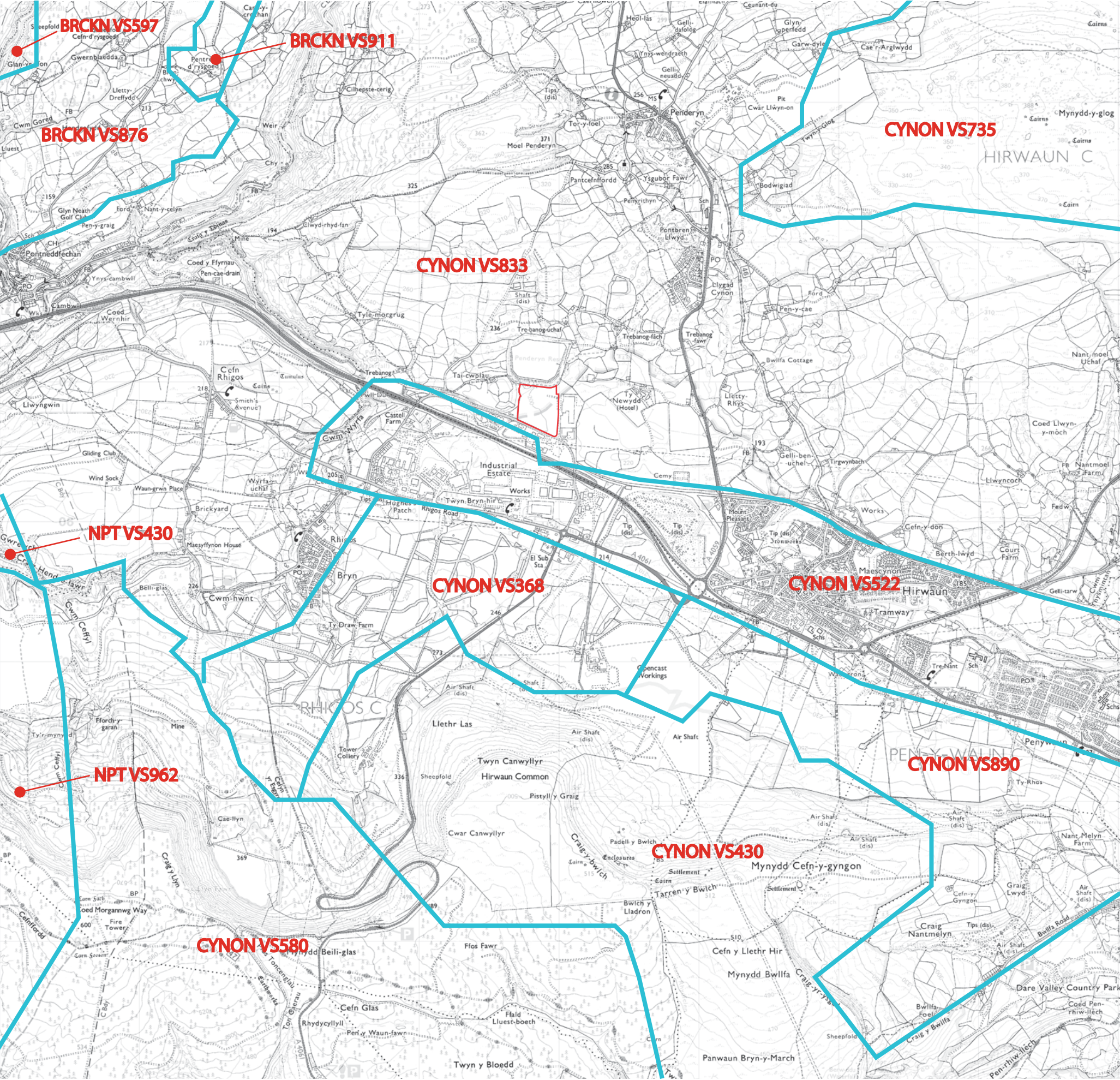
Main water courses

NOTE:- Reproduced from the Ordnance Survey Map with the permission of the Controller of H.M Stationary Office © Crown copyright license number 100024244 Savills (L&P) Limited. Published for the purposes of identification only and although believed to be correct accuracy is not guaranteed. Copyright Savills (L&P) Limited. No dimensions are to be scaled from this drawing.

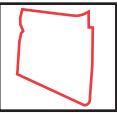
Figure 12.3:
Landscape Character
Areas



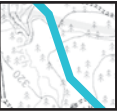
date	October 2008
scale	NTS
reference	W/PL 142427



KEY



Site boundary



Approximate boundary of visual and sensory aspect area



CCW Landmap visual and sensory aspect area code

CYNON - Bridgend/ Caerphilly/ Rhondda Cynon Taf
BRCKN - Brecknockshire
NPT - Neath, Port Talbot

Cynon VS735 - Cadair Fawr
Cynon VS833 - Penderyn
Cynon VS522 - Aberdare
Cynon VS368 - Opencast
Cynon VS430 - Hirwaun Common
Cynon VS580 - St Gwynno
Cynon VS890 - Craigr Nantmelyn

BRCKN VS876 - Nedd Fechan and Mellte Valleys
BRCKN VS911 - gwaun Hepste
BRCKN VS597 - Coed-y-Rhaiadr

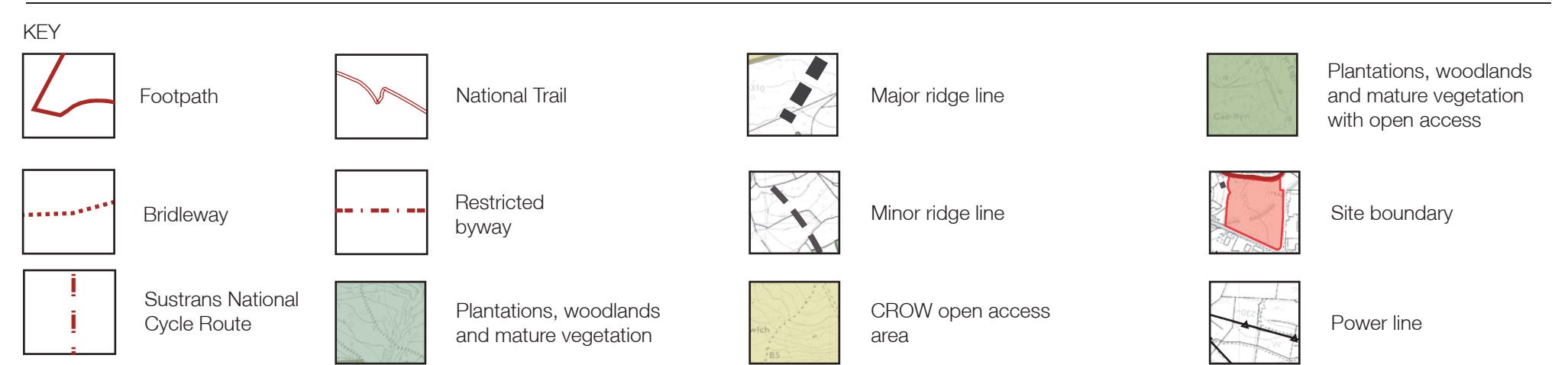
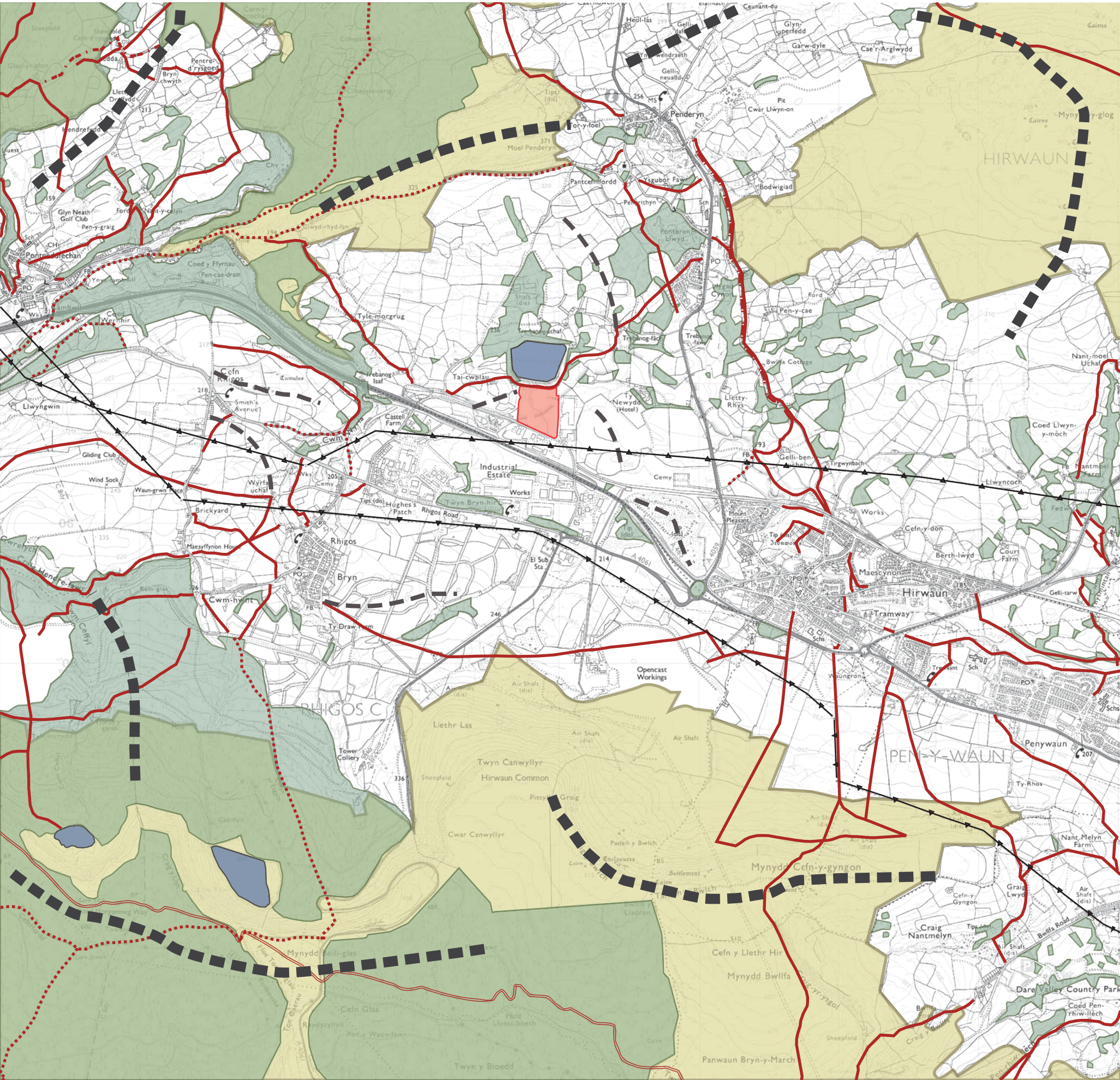
NPT VS430 - Gelliceibryn/ Pont Walby
NPT VS962 - Mynydd Nant y bar/ Mynydd Blaenafan

NOTE:- Reproduced from the Ordnance Survey Map with the permission of the Controller of H.M Stationary Office © Crown copyright license number 100024244 Savills (L&P) Limited. Published for the purposes of identification only and although believed to be correct accuracy is not guaranteed. Copyright Savills (L&P) Limited. No dimensions are to be scaled from this drawing.

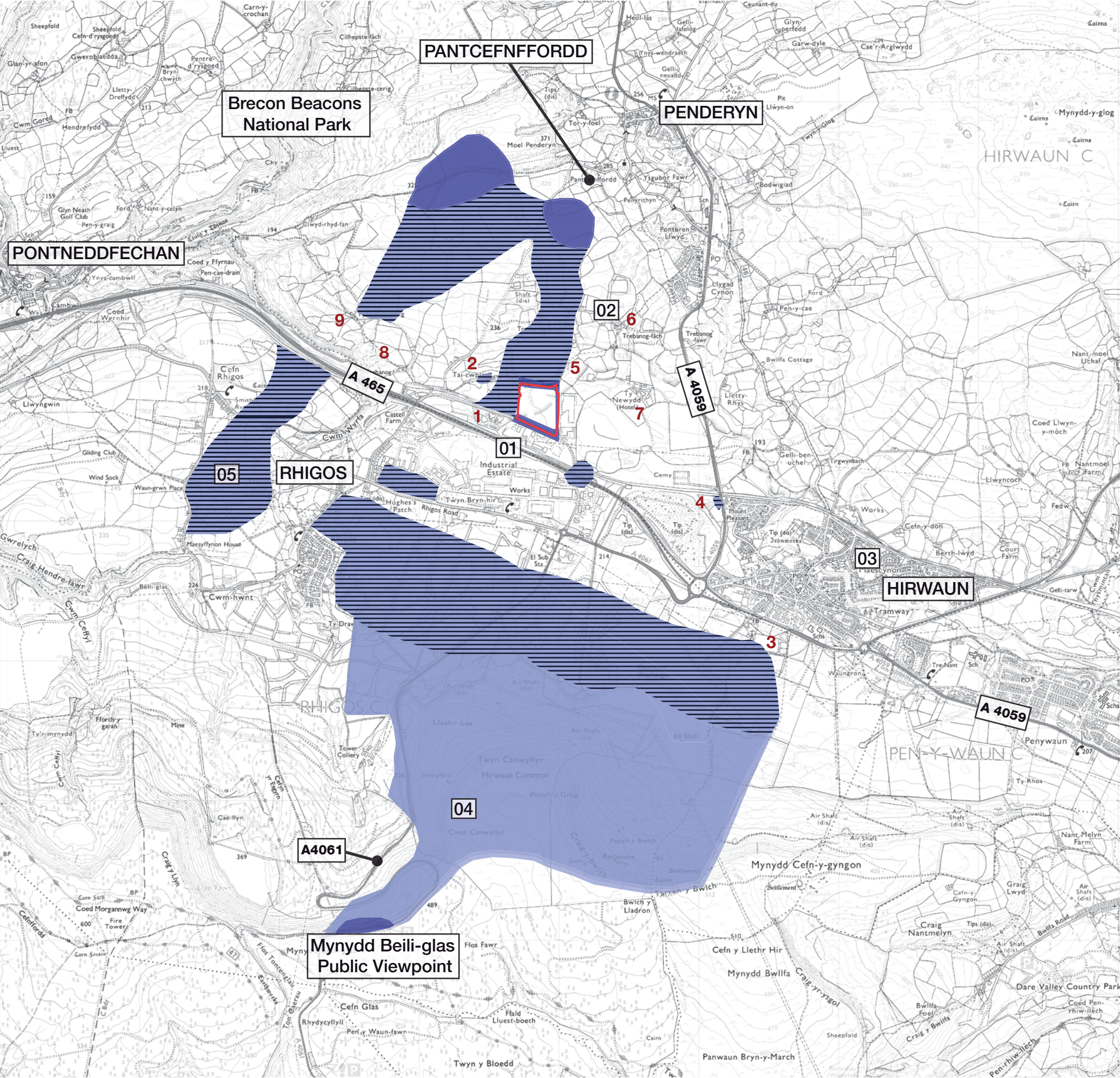
Figure 12.4:
Approximate Boundaries
of CCW Landmap Visual
and Sensory Aspect
Areas



date	October 2008
scale	NTS
reference	W/PL 142427



NOTE:- Reproduced from the Ordnance Survey Map with the permission of the Controller of H.M Stationary Office © Crown copyright license number 100024244 Savills (L&P) Limited. Published for the purposes of identification only and although believed to be correct accuracy is not guaranteed. Copyright Savills (L&P) Limited. No dimensions are to be scaled from this drawing.



KEY



Main areas of visual envelope

Clear views of site and development

Glimpsed or limited views of a part of the development



Site boundary



Viewpoint Areas

- 01 Site Environs
02 Brecon Beacons National Park
03 Hirwaun
04 Hirwaun Common
05 Rhigos

Named visual Receptors

1. Fifth Avenue House (hotel)
2. Tai-cwplau
3. Hirwaun RFC
4. Mount Pleasant Public House
5. Trebanog-uchaf
6. Trebanog-fâch
7. Ty Newydd Hotel
8. Trebanog Isaf
9. Tyle-morgrug Bunkhouse

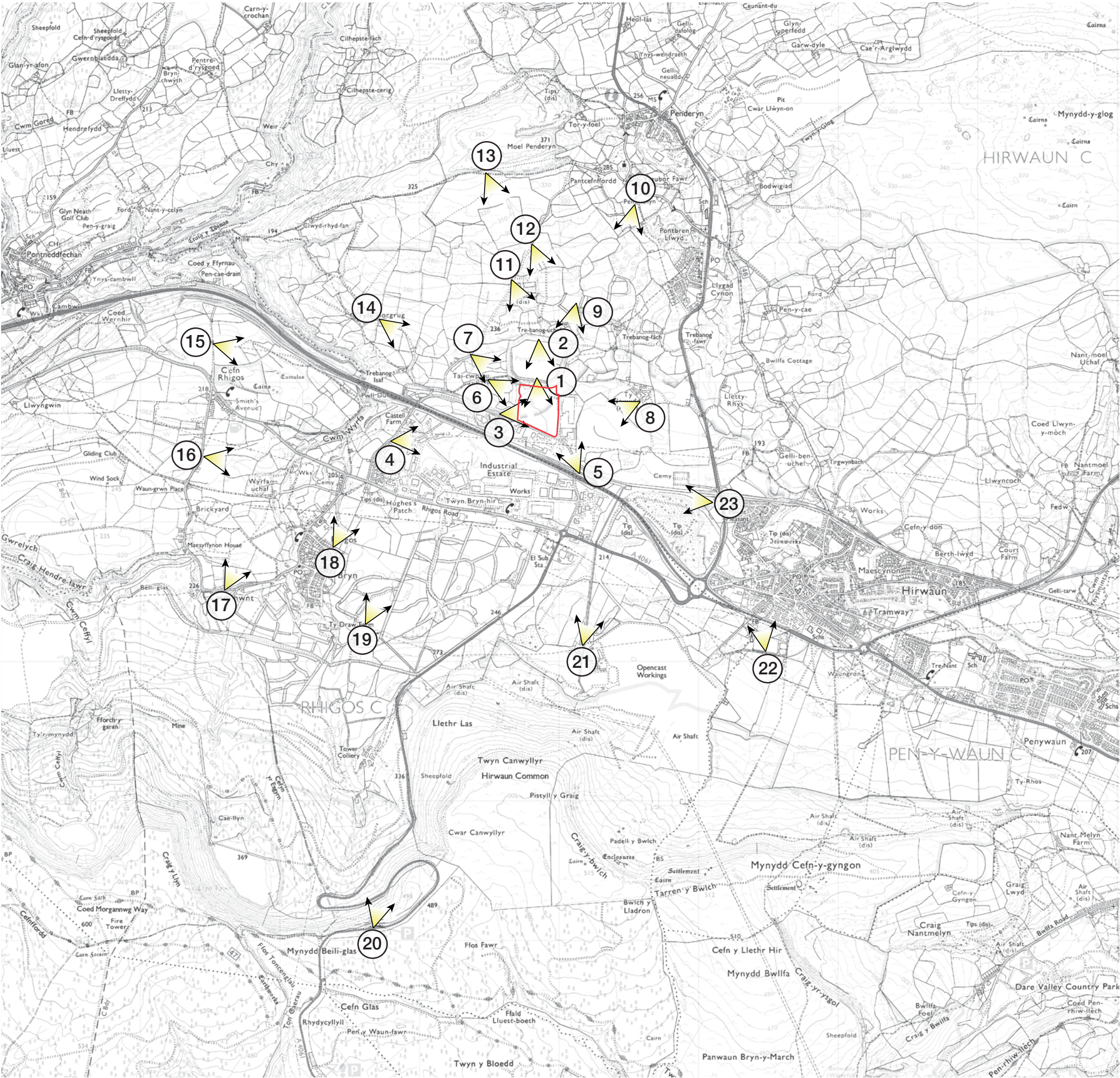
Note: Local roads are indicated on Figure 12.1.

NOTE:- Reproduced from the Ordnance Survey Map with the permission of the Controller of H.M Stationary Office © Crown copyright license number 100024244 Savills (L&P) Limited. Published for the purposes of identification only and although believed to be correct accuracy is not guaranteed. Copyright Savills (L&P) Limited. No dimensions are to be scaled from this drawing.

Figure 12.6:
Zone of Visual Influence
and Viewpoint Areas



date	October 2008
scale	NTS
reference	W/PL 142427



KEY

Photographic viewpoint location

Site boundary

NOTE:- Reproduced from the Ordnance Survey Map with the permission of the Controller of H.M Stationary Office © Crown copyright license number 100024244 Savills (L&P) Limited. Published for the purposes of identification only and although believed to be correct accuracy is not guaranteed. Copyright Savills (L&P) Limited. No dimensions are to be scaled from this drawing.

Figure 12.7:
Photographic Viewpoint
Locations



date	October 2008
scale	NTS
reference	W/PL 142427