

This drawing should not be scaled. Dimensions to be verified on site. Any discrepancies should be referred to the Engineer prior to work being put in hand. This drawing is the property of Waterman Infrastructure & Environment Limited, and the drawing is issued on the condition that it is not copied, reproduced, related or disclosed to any unauthorised person, either wholly or in part without the consent in writing of Waterman Infrastructure & Environment Limited. Pickfords Wharf, Clink Street, London SE1 9DG. 1 020 7928 7888 | 03333 444 501

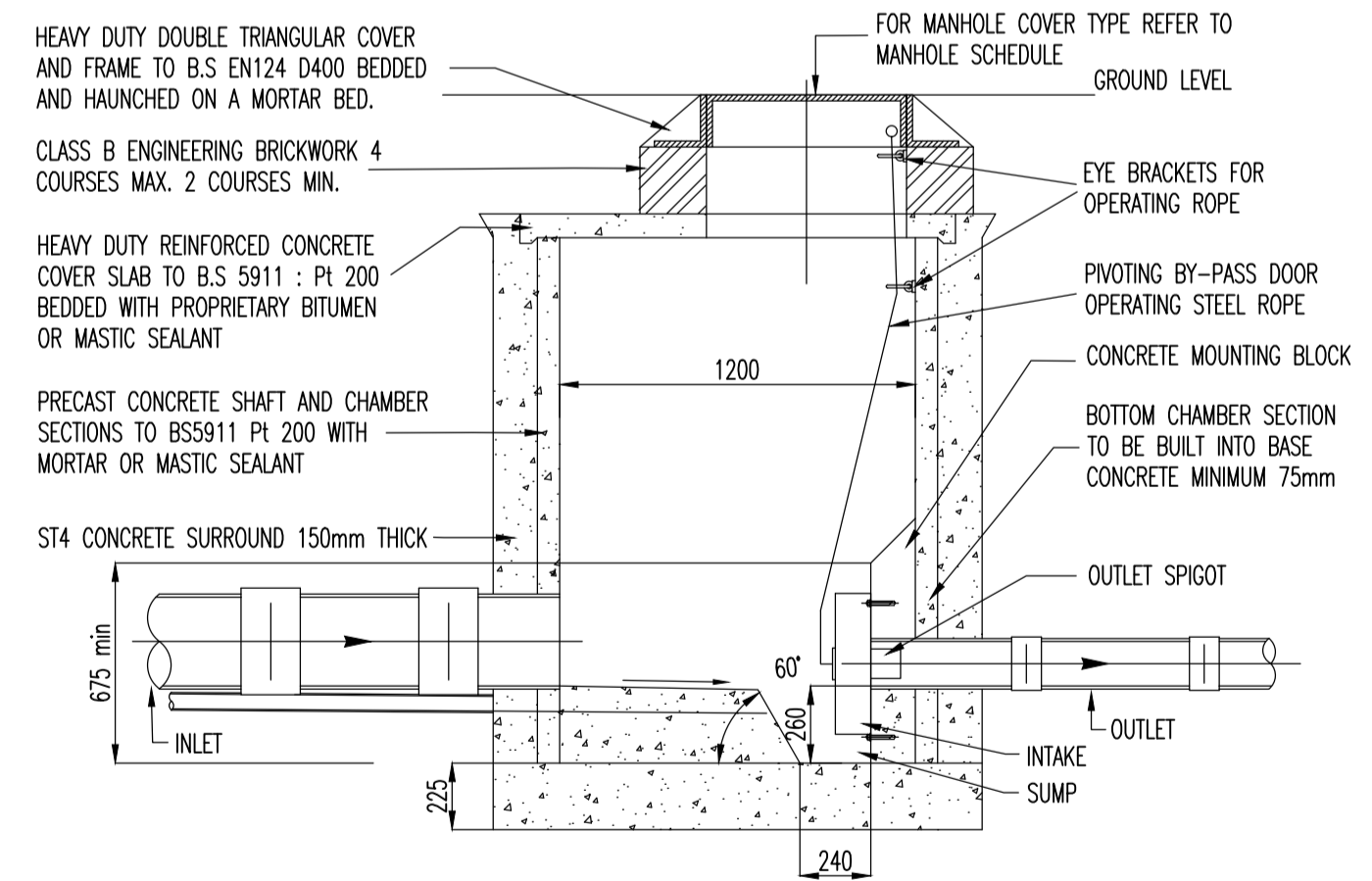
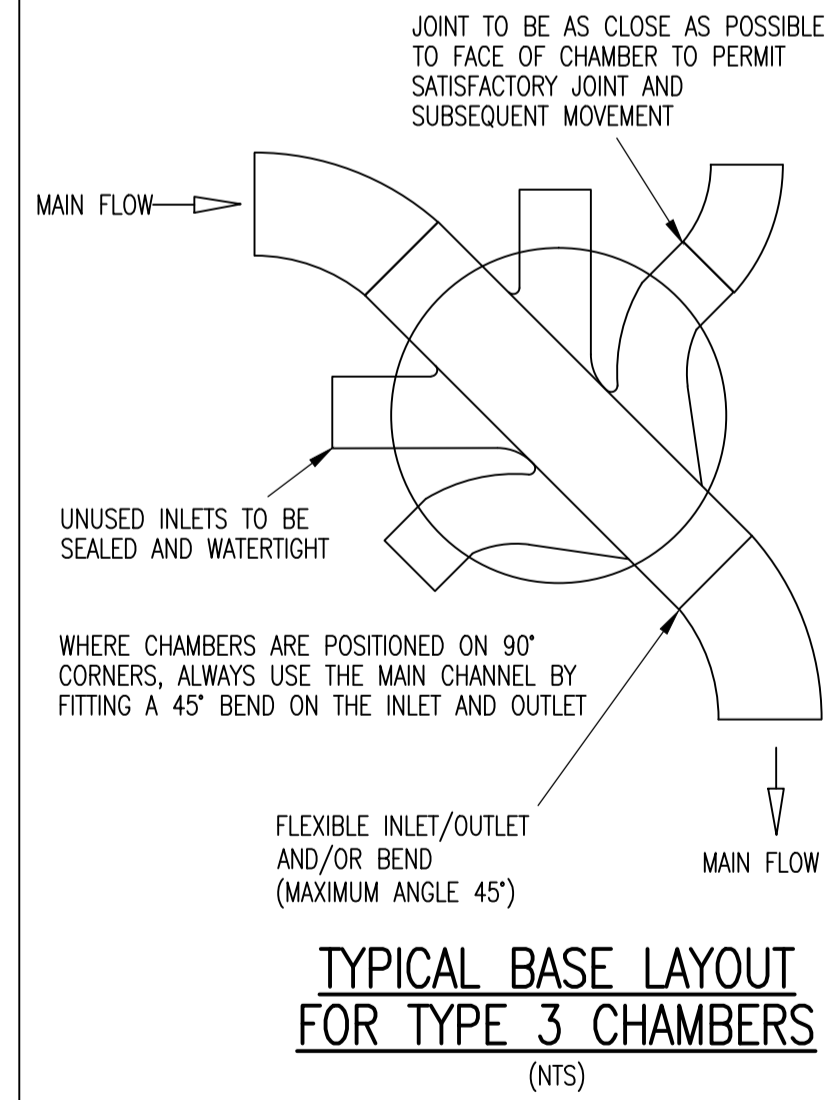
**GENERAL NOTES**

1. THIS DRAWING IS TO BE READ IN CONJUNCTION WITH ALL ENGINEER'S, ARCHITECT'S OR OTHER RELEVANT DRAWINGS AND SPECIFICATIONS.
2. ALL DIMENSIONS AND LEVELS ARE TO BE CHECKED ON SITE BY THE CONTRACTOR PRIOR TO PREPARING ANY WORKING DRAWINGS OR COMMENCING ON SITE.
3. THE CONTRACTOR MUST ENSURE AND WILL BE HELD RESPONSIBLE FOR THE OVERALL STABILITY OF THE BUILDING/STRUCTURE/EXCAVATION AT ALL STAGES OF THE WORK.
4. ALL WORK BY THE CONTRACTOR MUST BE CARRIED OUT IN SUCH A WAY THAT ALL REQUIREMENTS UNDER THE HEALTH AND SAFETY AT WORK ACT ARE SATISFIED.
5. ALL WORK IS TO BE CARRIED OUT IN COMPLIANCE WITH THE REQUIREMENTS OF THE RELEVANT STATUTORY AUTHORITIES AND REGULATIONS.
6. DESIGN BASED ON MADE GROUND CLR <math>-2\%</math>.

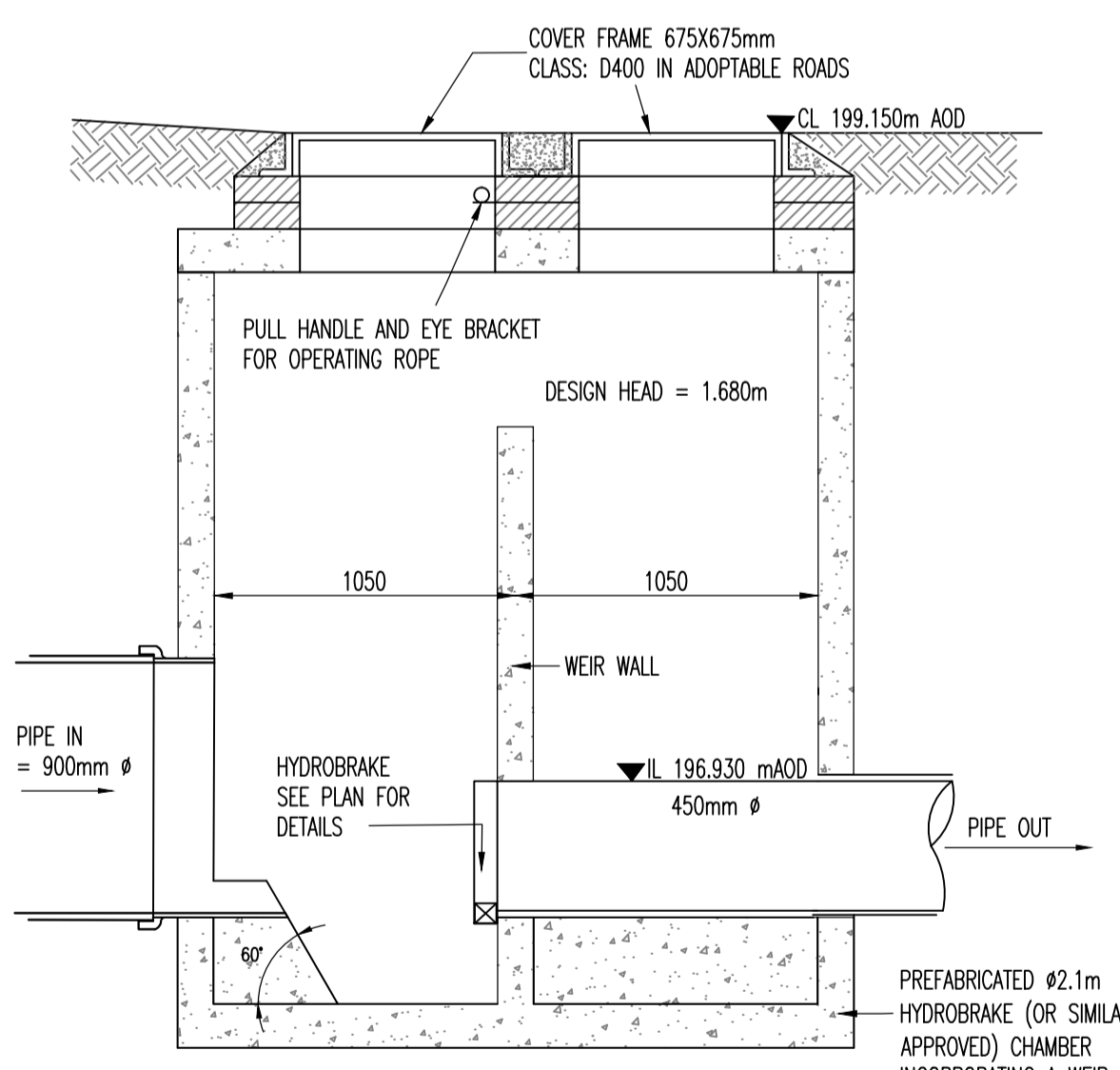
**TYPICAL MANHOLE DETAIL - TYPE 1A**  
(DEPTH FROM COVER LEVEL TO SOFFIT OF PIPE 3m TO 6m)  
(NTS)

**TYPICAL MANHOLE DETAIL - TYPE 2**  
(MAXIMUM DEPTH FROM COVER LEVEL TO SOFFIT OF PIPE 3.0m)  
(NTS)

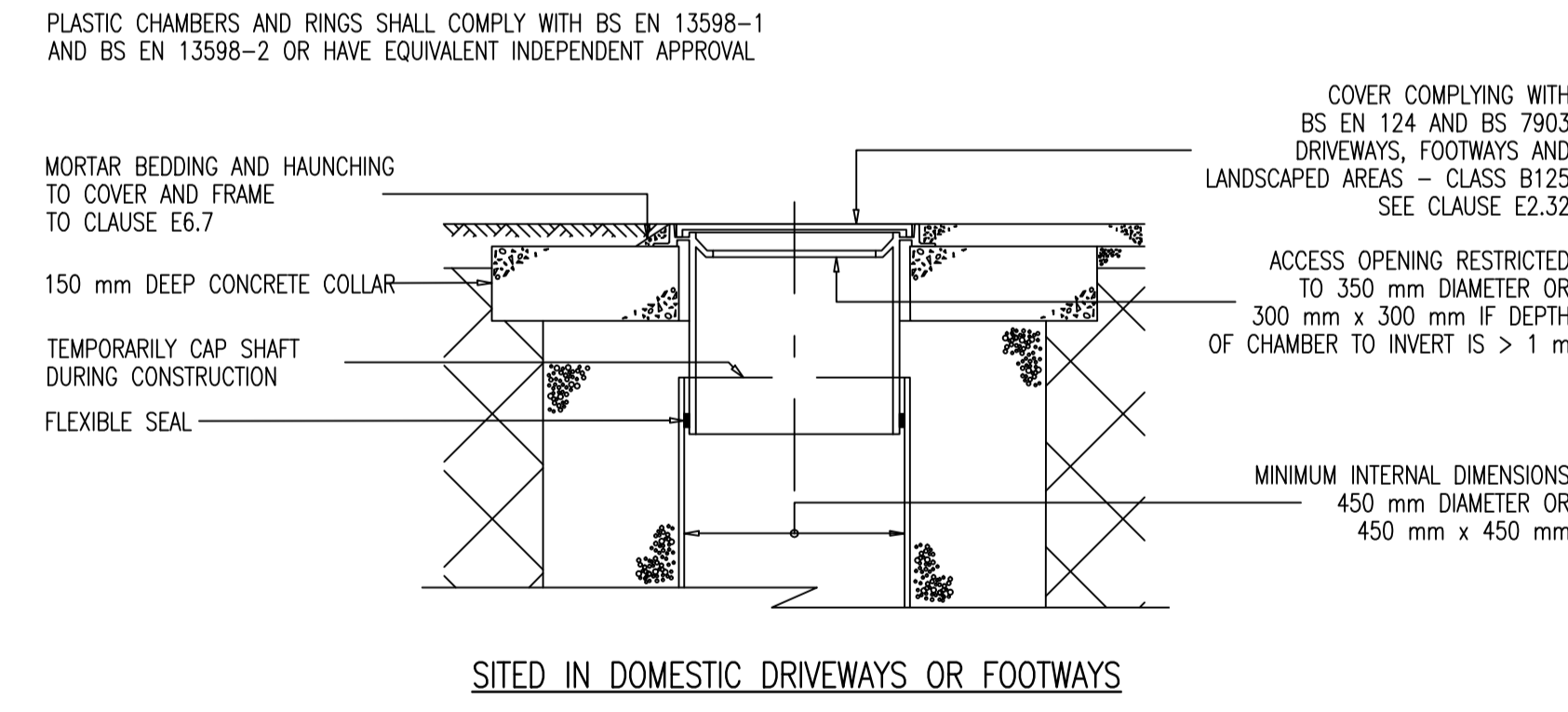
**TYPICAL INSPECTION CHAMBER DETAIL - TYPE 3 (FLEXIBLE MATERIAL)**  
(MAXIMUM DEPTH FROM COVER LEVEL TO SOFFIT OF PIPE IN AREAS SUBJECT TO VEHICLE LOADING 3m NON-ENTRY)  
(NTS)



**HYDROBRAKE MANHOLE S19B**  
TYPICAL INSTALLATION DETAIL  
SCALE (1:25)



**HYDROBRAKE MANHOLE - S30**  
UNIT REFERENCE = MD-SHE-0235-3220-1680-3220  
SCALE (1:25)



**ALTERNATIVE TOP DETAILS FOR LIGHT VEHICLE LOADING AND LANDSCAPED AREAS - TYPE 3**  
(NTS)

Rev	Date	Description	By
A04	07.04.15	HYDROBRAKE DETAIL ADDED	ROS
A03	02.10.13	ALL DETAILS REMOVED AND REPLACED WITH SFA 7th EDITION MANHOLE DETAILS.	SJ
A02	26.09.13	DRAWING TITLE AND NOTES AMENDED.	SJ
A01	18.09.13	FIRST ISSUE	SJ

Project: **ENVIROPARKS, HIRWAUN**

Title: **CONSTRUCTION DETAILS (SHEET 3 OF 4)**

Client: **DAWNUS CONSTRUCTION LTD**



38 Cathedral Road Cardiff CF11 9LL  
1 020 2038 4400 | 03333 444 501  
mail@watermangroup.com www.watermangroup.com

Drawing Status				
PLANNING				
Designed by	AS	Checked by	AS	Project No
Drawn by	SJ	Date	AUGUST 2013	14979-
Scalcs @ A1	work to figured dimensions only	AS SHOWN	Computer File No	CVI-14979-SA-90-0005-ADG.dwg
Publisher	Zone	Category	Number	Revision
CIV	SA	90	0005	A04