

COMPANY OVERVIEW



Introducing

**FBW
ENGINEERING
SERVICES**

Location

Golborne
Warrington, UK

Founded

1995

Press contacts

Cubed
0161 768 1010
Leanne@cubedthinking.com
Rebecca@cubedthinking.com



COMPANY BACKGROUND



FBW Engineering Services Limited is a global, first class provider of process, mechanical, electrical and ICA engineering services to UK based and overseas clients.

Founded in 1995 by directors Alan Forshaw and Martin Bleasdale, the North West-based company is now run by four directors; Alan, Martin as well as Mike Dawber and Ian Hampson who joined the board following an MBO in 2015.

The company is underpinned by a comprehensive team of 20+ expert engineers, designers and engineering managers each of whom boasts a complementary range of skills and experience covering FBW's four key service areas; design and engineering, project management, construction, commissioning and operations management and its support services division.

The company boasts an impressive client base and has carried out projects on behalf of major players in the water, waste water and construction sectors including: Costain, Balfour Beatty, United Utilities, MWH Treatment and Bilfinger.

Clients are offered a holistic service encompassing all stages of a construction project; from early client engineering assistance, to the production of detailed process, mechanical and electrical design packages thereby driving the successful delivery of projects through the feasibility, design, construction and commissioning process.

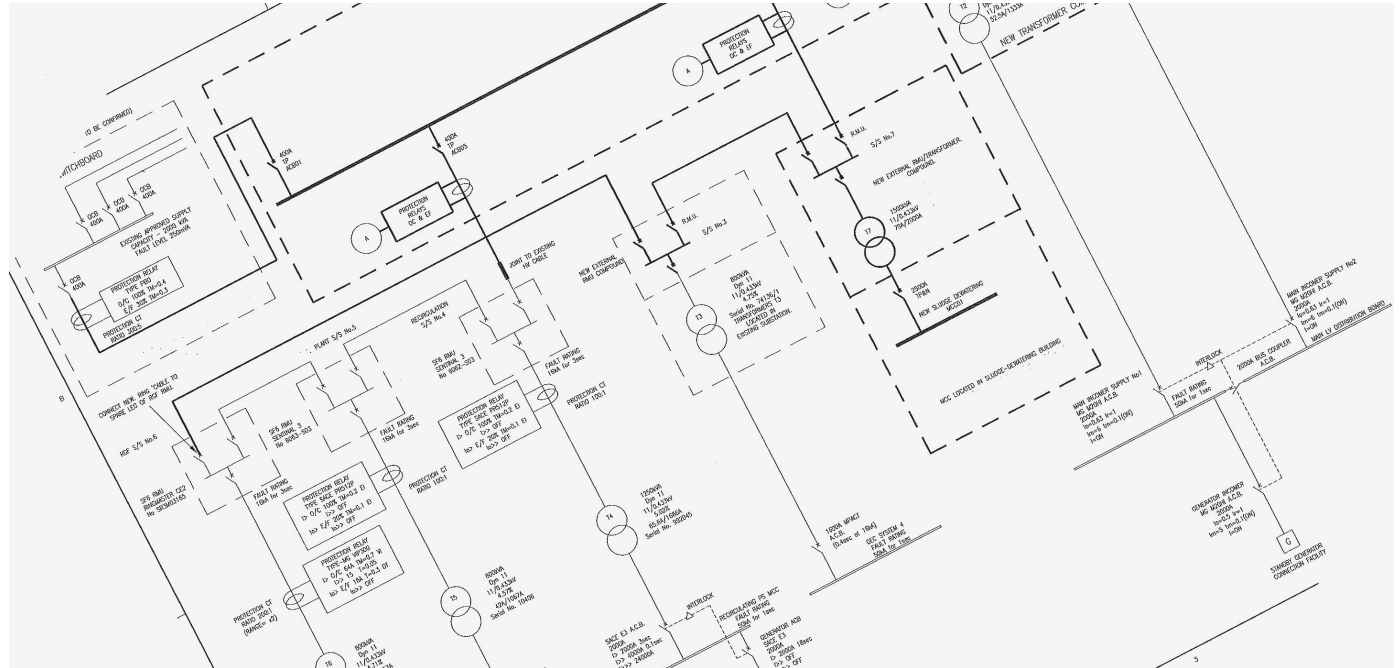
With the aid of its civil and structural partners, FBW is able to deliver turnkey projects to suit its client needs. Additionally the team is equally comfortable working alongside other specialist Consultants that are selected by its Clients.

All of its services are delivered with professionalism and a commitment to achieve the goals set by its clients. Through the successful realisation of these goals the FBW team is proud to have developed strong and lasting relationships that are a hallmark of the business.



WHAT WE DO

DESIGN AND ENGINEERING; ELECTRICAL & ICA



FBW employs a number of electrical and ICA engineers with a wide range of experience within the food/beverage, water, waste water and municipal waste industries who can offer the following Electrical/ICA Design and Engineering services:

- Feasibility and front end studies, site electrical infrastructure surveys and liaison with electricity supply authorities
- LV/HV distribution system design
- Conventional and intelligent motor control system design and electrical schematics
- Instrumentation specification
- Control Philosophy and Functional Design Specifications (FDS)
- Electrical installation and equipment specifications
- Acceptance testing - attendance at MCC Hardware and Software factory and site acceptance testing

WHAT WE DO

DESIGN AND ENGINEERING; MECHANICAL, PROCESS, CIVIL & STRUCTURAL



FBW's Mechanical and Process engineers have a wide range of experience within the food/beverage, water, waste water and municipal waste industries. This experience allows us to provide all aspects of mechanical and process design from the conceptual phase through to construction. Working closely together our mechanical and process engineers successfully deliver integrated, safe and cost efficient designs for our clients. Some of our main design services include:

Mechanical

- Asset condition surveys and site investigations
- Feasibility and front end engineering design studies
- Mechanical system (e.g. pumps, blowers etc) design and specification
- Mechanical equipment selection and specification
- Detail design drawings using our team of experienced draughtsmen who are proficient in both 2D and 3D CAD platforms
- Witness testing – attendance at pump performance tests, tank inspections etc

- Contract engineering assistance, including equipment selection, tender analysis, subcontract technical administration and expediting

Process

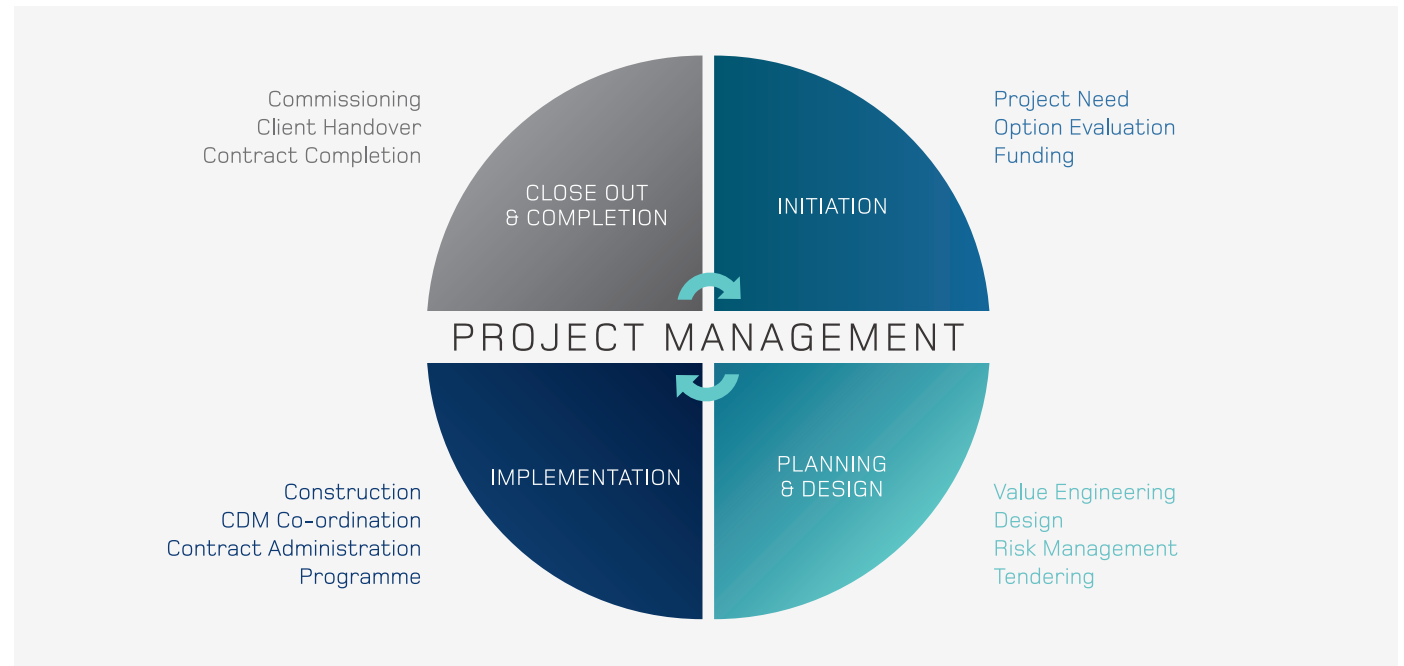
- Conceptual and detailed process design studies including process simulations
- Pilot trial studies
- Calculations
- Mass balance/process flow diagrams
- Process and instrumentation diagrams

Civil and structural

- Through close working relationships with a number of civil engineering partners we can offer a variety of services such as ground investigation studies, topographical survey, services survey, detail civil design and liaison with regulatory and planning authorities

WHAT WE DO

PROJECT MANAGEMENT



FBW delivers its clients' projects efficiently, on programme and within budget by applying our wealth of project management experience and versatility.

Our project management services are aimed at ensuring client's interests are protected and that all parties are committed to the success of the project.

FBW can assist you with:

- Design co-ordination; multi-discipline engineering co-ordination of the design phase to deliver and communicate an agreed and aligned design solution to all stakeholders thus facilitating successful construction and commissioning
- Project/contract management; delivery of the project from design phase to completion including procurement, sub-contract administration, cost control and client liaison
- CDM co-ordination; management and responsibility of the health and safety elements of construction projects including advising all parties of their duties under the CDM regulations and ensuring that health and safety is given the requisite consideration through all phases of the project

WHAT WE DO

CONSTRUCTION, COMMISSIONING AND OPERATIONS MANAGEMENT



FBW is able to follow through its design projects to provide on-site construction, commissioning and operational support to ensure client projects are driven through to completion.

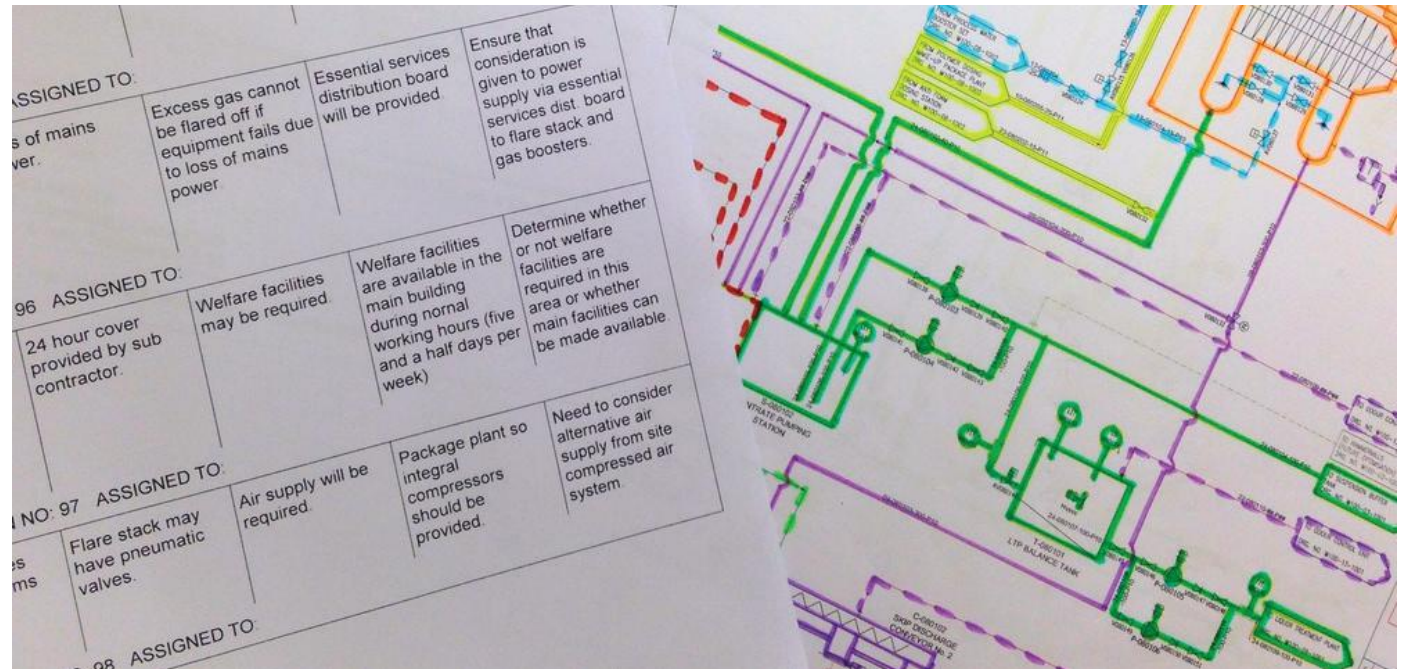
Our experienced, professional and dedicated team is able to adapt to the changing environment and challenges that different sites often present, always meeting and often exceeding our client's expectations.

FBW can assist you with:

- Mechanical and electrical installation supervision and management
- Expediting and equipment inspection and compliance checks
- Management of site testing and commissioning
- Plant optimisation
- Operator training
- Permit co-ordination
- Minimisation of snagging/defects
- Troubleshooting
- Liaison with regulatory authorities
- The production of all associated documentation and plans

WHAT WE DO

SUPPORT SERVICES



FBW offers a range of support services and can demonstrate an excellent track record in:

- HAZOP / ALM / HAZCON / HAZCOMM studies:
Hazard Identification and Mitigation is a crucial element in the delivery of engineering projects and FBW have a trained team of engineers greatly experienced in the facilitation of HAZID, HAZOP and ALM studies. Using specialist software FBW have carried out almost 1000 studies across the globe ranging from simple pumping stations to complex process plants. We not only facilitate the study meeting but continue to support the project teams in ensuring that the actions from the HAZOP and ALM are implemented and the process closed out. We also recognise the need to review hazards in construction and commissioning, as well as design, and can offer HAZCON and HAZCOMM facilitation.
- DSEAR Assessments
- Tender preparation, analysis and appraisal
- Value engineering
- Condition surveys
- Asset management plans
- Expediting
- Equipment inspection and compliance checks
- Works performance testing
- O&M Manual production

KEY SPOKESPEOPLE



MARTIN BLEASDALE

Managing Director
and Principal
Mechanical Engineer

A Mechanical Engineer by profession, Martin spent the first 20 years of his career working in the aerospace, nuclear and general engineering sectors before teaming up with co-director Alan Forshaw to establish FBW in 1995.

He has since played a pivotal role in setting a clear strategic direction for the company and his vision has helped FBW develop long-term relationships with 'blue chip' clients by providing a first class service. The volume of repeat business generated by FBW is testament to the success of his strategy.

A self-motivated professional, Martin has gained extensive experience in project and contract management, engineering design and project delivery. He has worked on a wide range of projects including water, wastewater and sludge treatment facilities, waste recycling facilities, bio-energy plants and on-farm AD projects.

KEY SPOKESPEOPLE



ALAN FORSHAW

Commercial & Financial
Director and Principal
Electrical Engineer

One of the founding directors of the business, Alan teamed up with Martin Bleasdale in 1995 to establish FBW. Alan has been instrumental in the development of the company with particular emphasis on the commercial and financial aspects resulting in continued and steady growth. He has helped take the company from a new start-up to its current status as a well-established and respected provider of specialist MEICA, civil and process engineering services.

Alan is an Electrical Engineer by profession, with over 40 years experience gained in the water and wastewater industry, chemical manufacturing industry, food & beverage, municipal waste and waste to energy sectors. In addition to the managerial aspects of his career, Alan has always maintained a heavy involvement in projects at an engineering level, and has worked on a wide range of schemes including water, wastewater and sludge treatment facilities, waste recycling facilities, bio-energy plants and on-farm AD projects.

KEY SPOKESPEOPLE



MIKE DAWBER
Operations Director

Mike is an electrical engineer and has spent most of his 20-year career working within the water and waste industries.

Mike joined FBW in 1999 and since then he has been involved at all stages of the project lifecycle from concept design and optioneering through to commissioning and handover.

Mike has taken lead roles delivering projects both within a design and site-based environment and as such has an excellent practical understanding of mechanical and process engineering; he is a specialist in the commissioning and operational side of the business and has aided many of FBW's clients in delivering projects through to successful completion.

As Operations Director at FBW, Mike is responsible for the management of the site-based project teams and the safe efficient delivery of construction and commissioning projects.

KEY SPOKESPEOPLE



IAN HAMPSON
Technical Director

Ian is a respected senior mechanical engineer with over 20 years' experience at FBW working in the municipal water/wastewater, industrial effluent and sludge processing industries. Ian has particular experience in the management of large capital investment programmes, developing client solution strategies and engineering standards as well as being responsible for the detail design development, co-ordination and contract engineering associated with specific construction projects.

Ian understands the needs and goals of both end-users and contractors, an important element of being involved with and delivering successful projects.

Ian also acts as Technical Director of FBW, responsible for the management and control of engineering quality and standards within the company, and also oversees the development of its 3D and BIM capability.

FURTHER
INFORMATION



FBW
ENGINEERING
SERVICES

Suite 4
Phoenix House
Golborne Enterprise Park
Warrington
WA3 3DP

team@fbweng.co.uk
01942 276000

www.fbweng.co.uk

