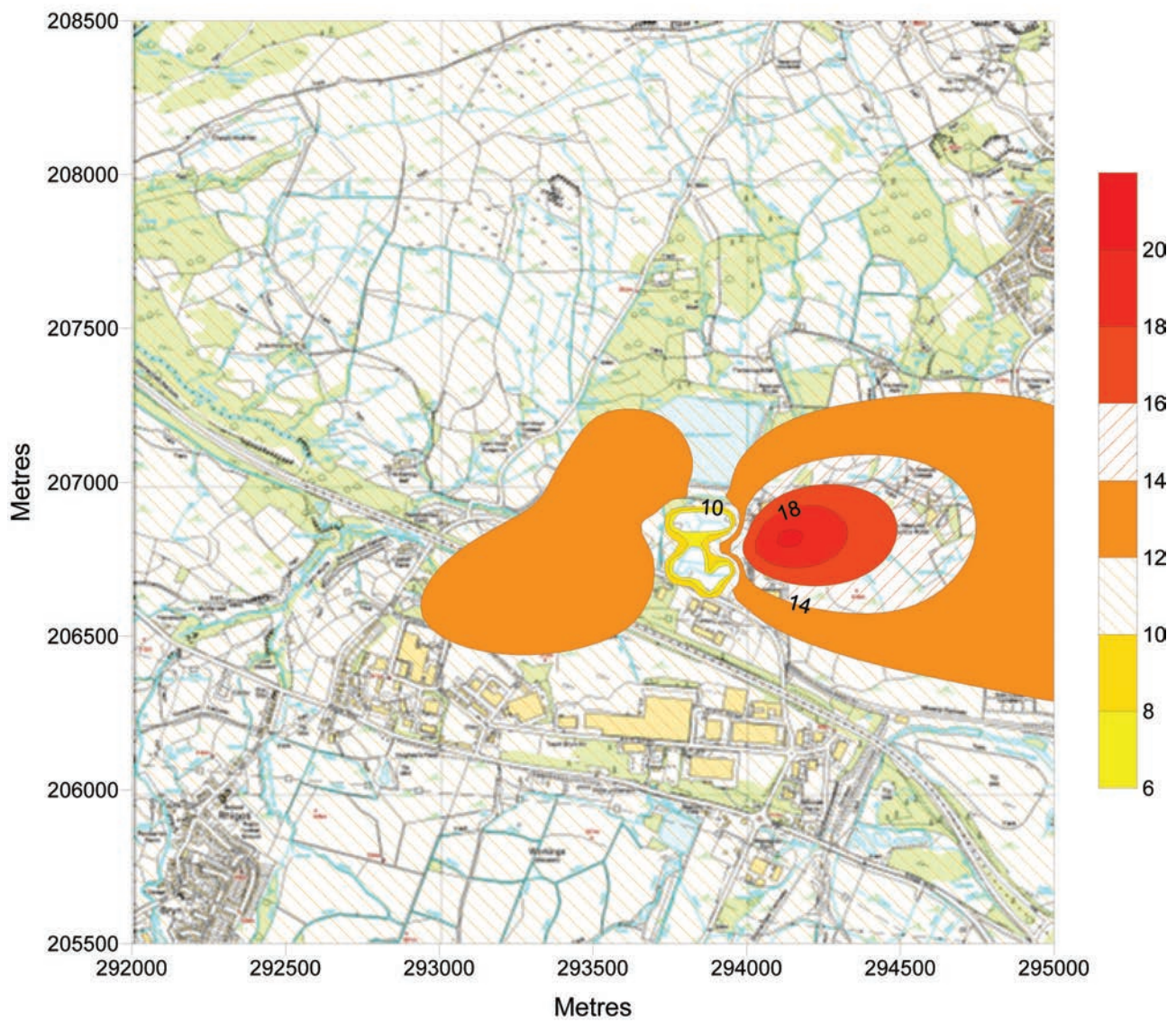


**Figure 1 Predicted Ground Level Concentration of Oxides of Nitrogen ( $\mu\text{g m}^{-3}$ ) as an Annual Average**

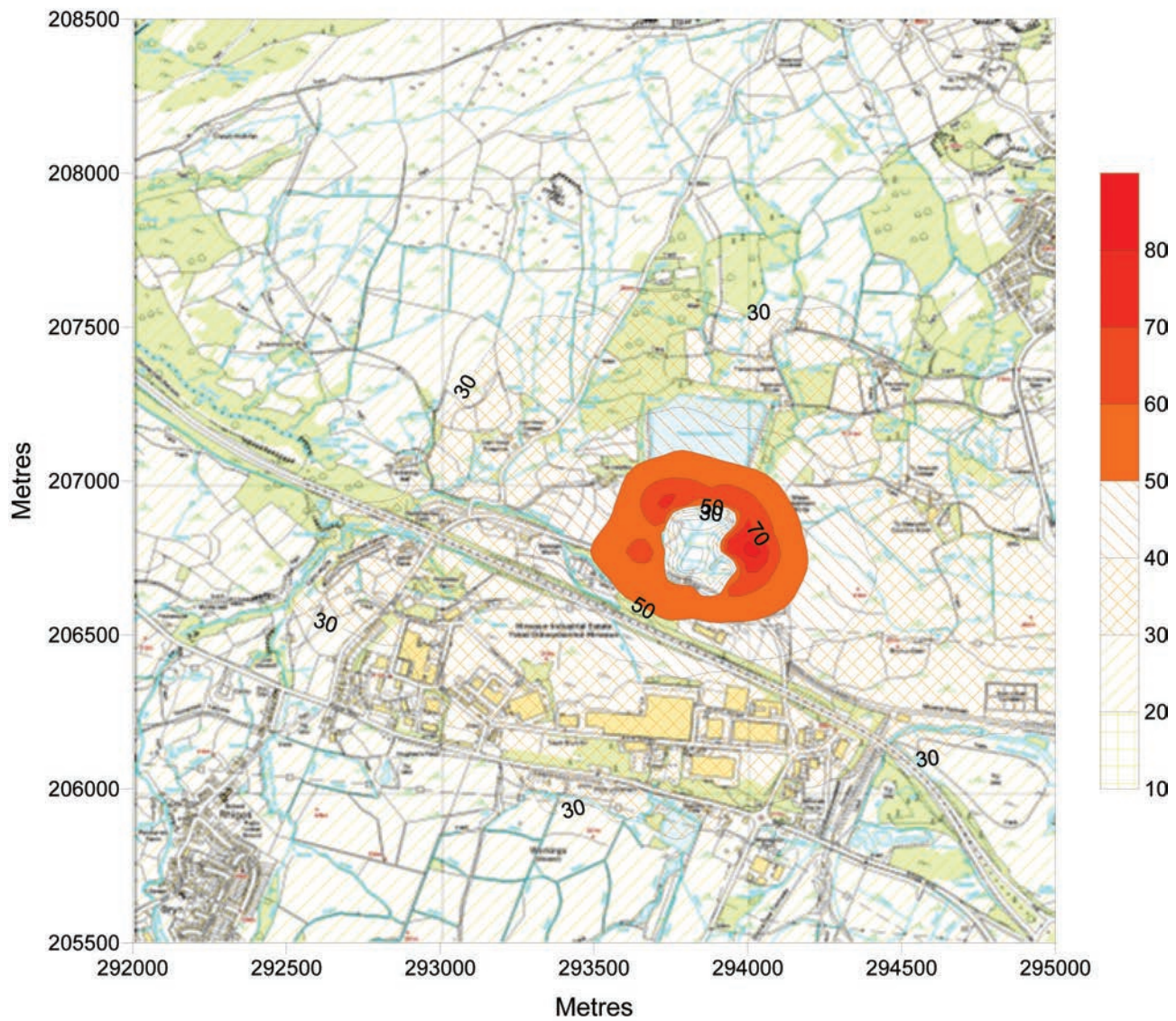


**Figure 2 Predicted Ground Level Concentration of Nitrogen Dioxide ( $\mu\text{g m}^{-3}$ ) as an Annual Average**

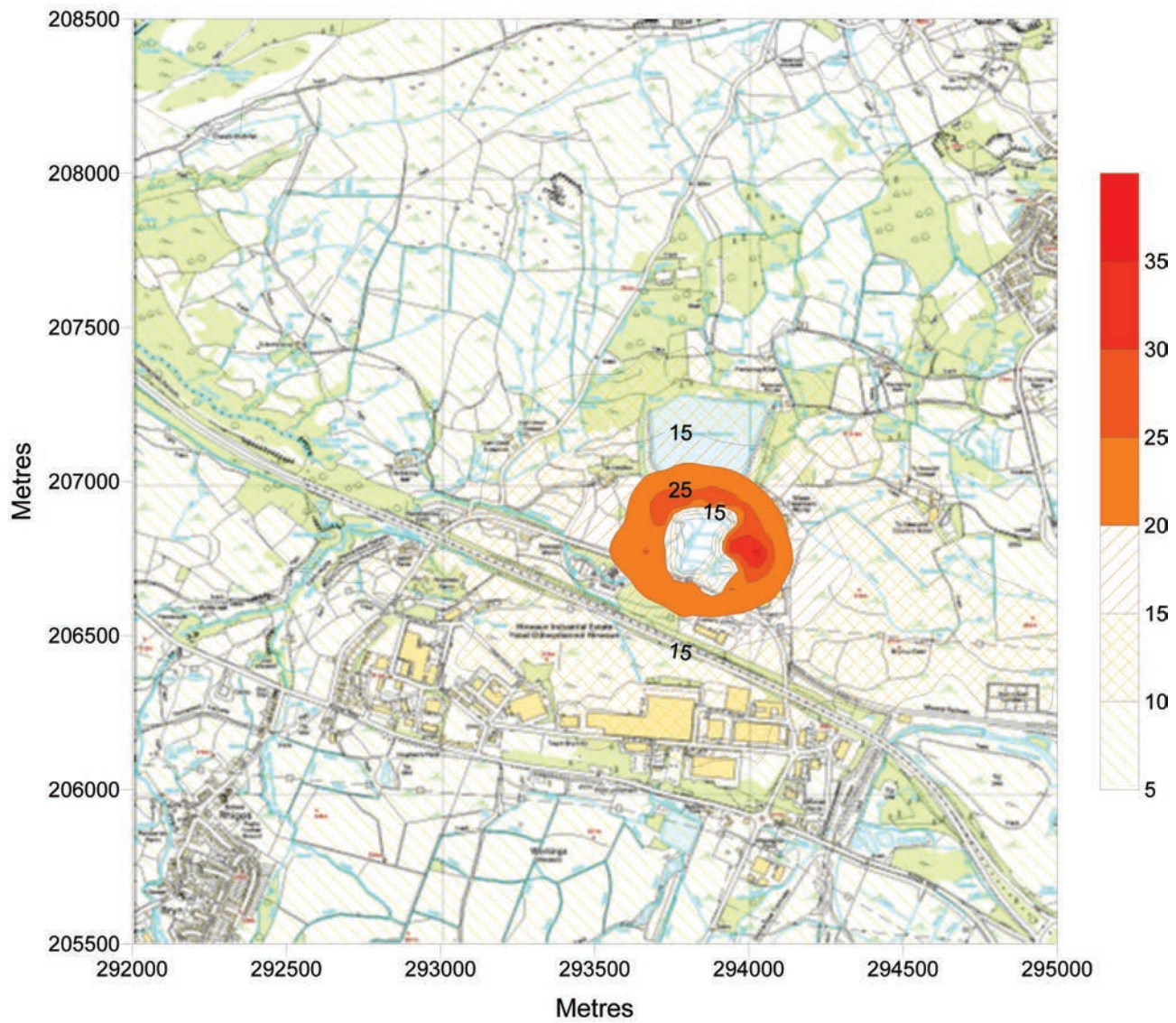




**Figure 3 Predicted Ground Level Concentration of Nitrogen Dioxide ( $\mu\text{g m}^{-3}$ )  
as an Hourly Average Exceeded no More than 18 Times per Year**

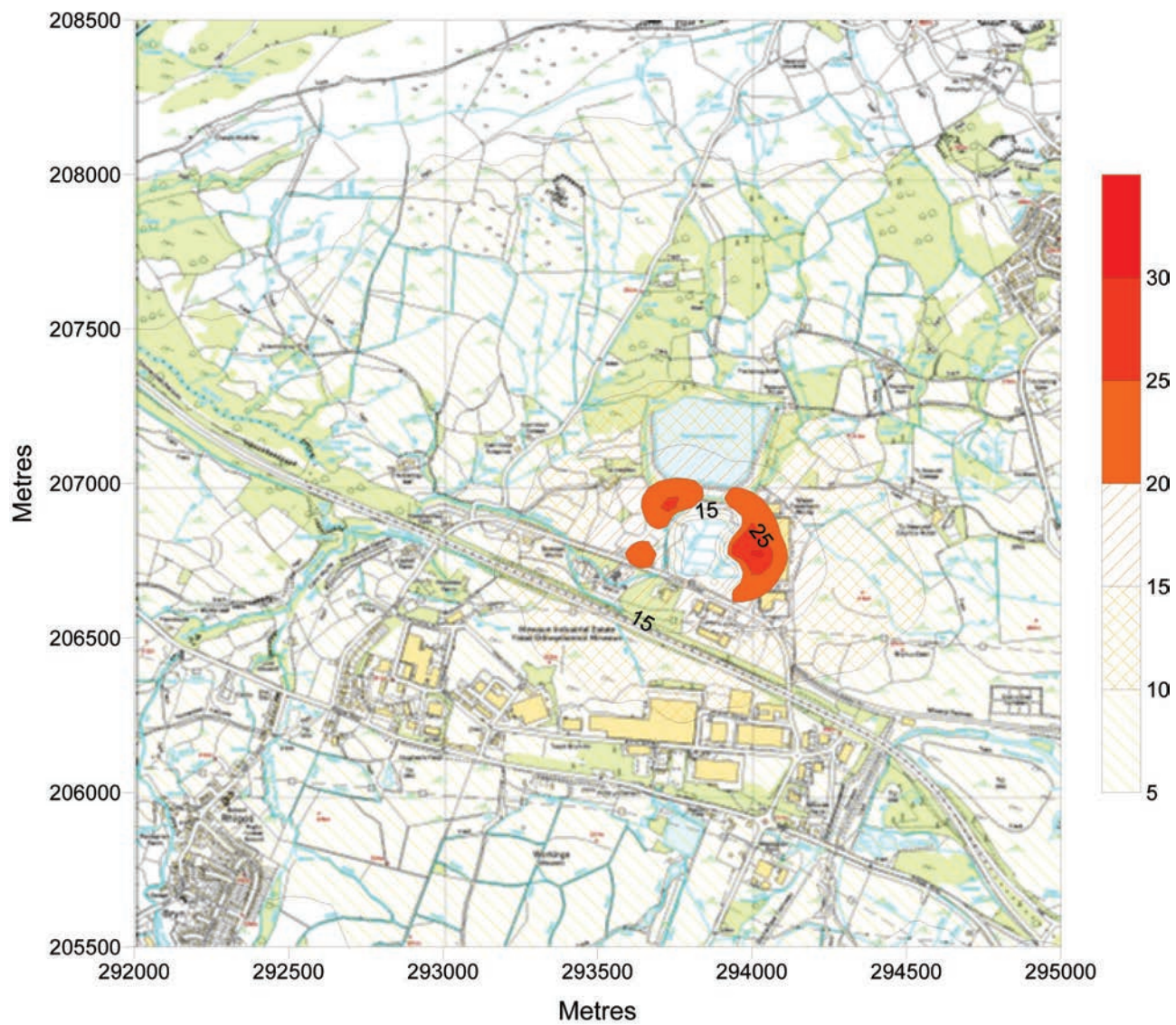


**Figure 4 Predicted Ground Level Concentration of Sulphur Dioxide ( $\mu\text{g m}^{-3}$ )  
as a 15 Minute Average Exceeded no More than 35 Times per Year**

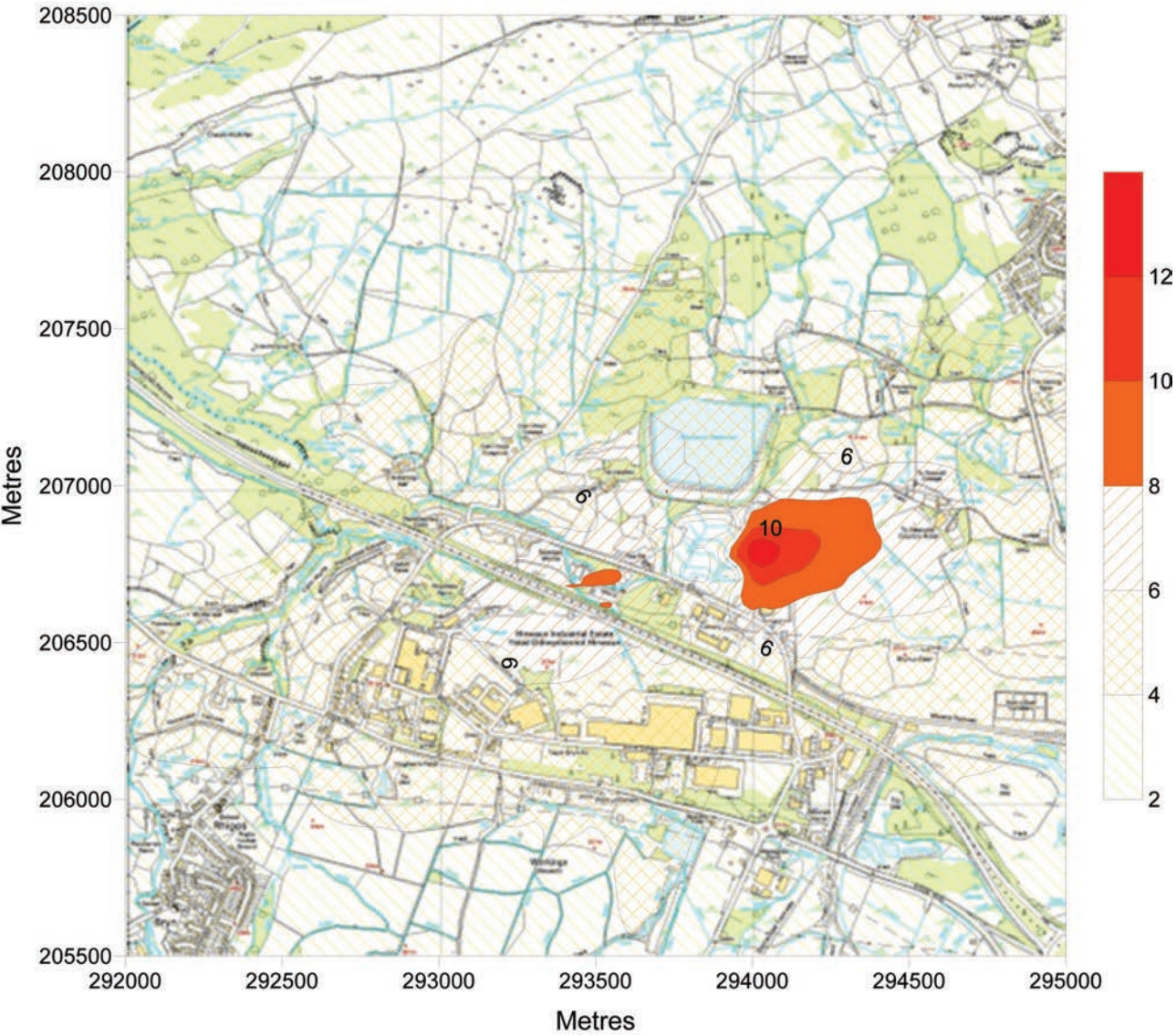




**Figure 5 Predicted Ground Level Concentration of Sulphur Dioxide ( $\mu\text{g m}^{-3}$ )  
as an Hourly Average Exceeded no More than 24 Times per Year**

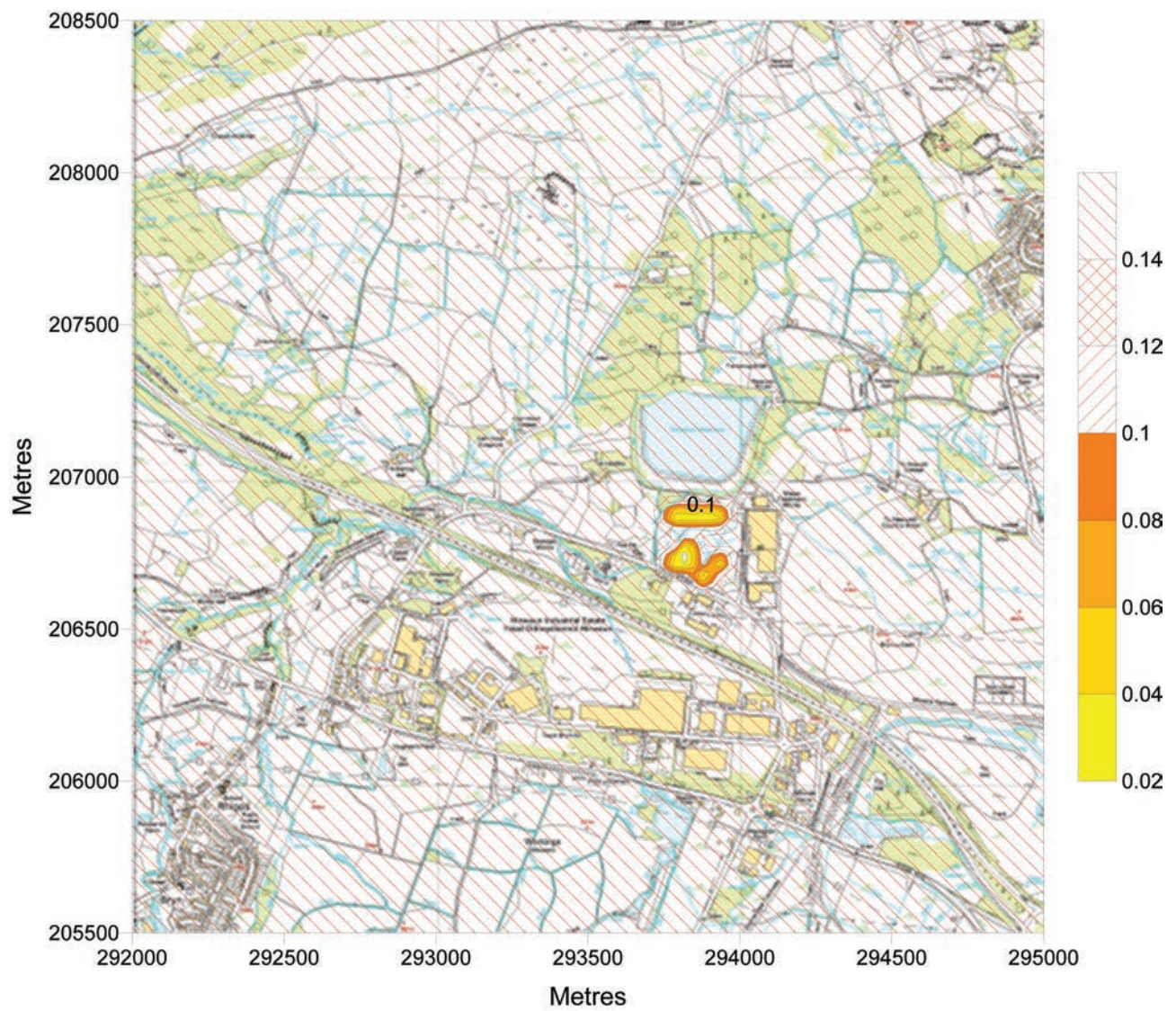


**Figure 6 Predicted Ground Level Concentration of Sulphur Dioxide ( $\mu\text{g m}^{-3}$ )  
as a Daily Average Exceeded no More than 3 Times per Year**



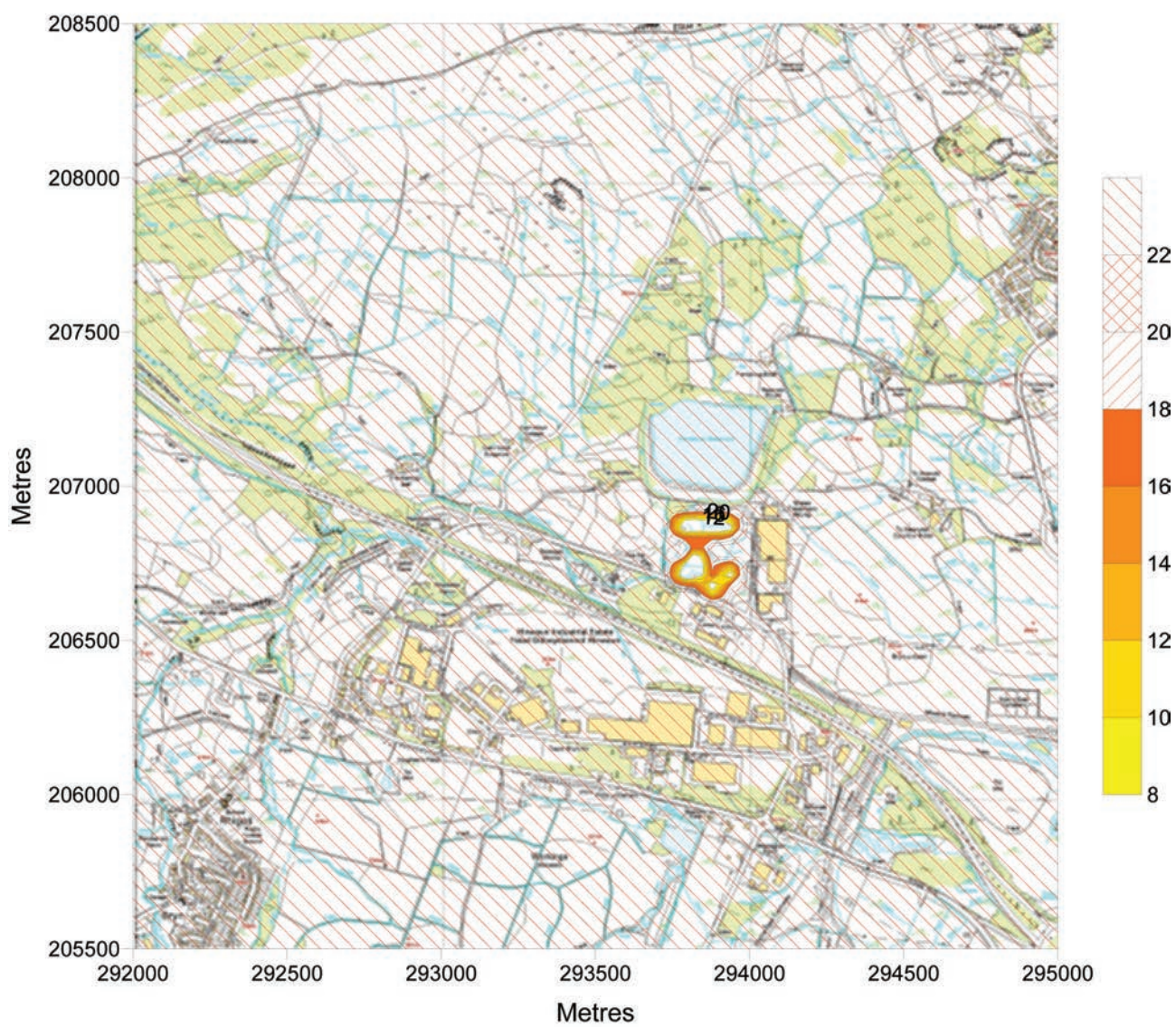


**Figure 7 Predicted Ground Level Concentration of Carbon Monoxide (mg m-3)  
as a Running 8 Hour Average**



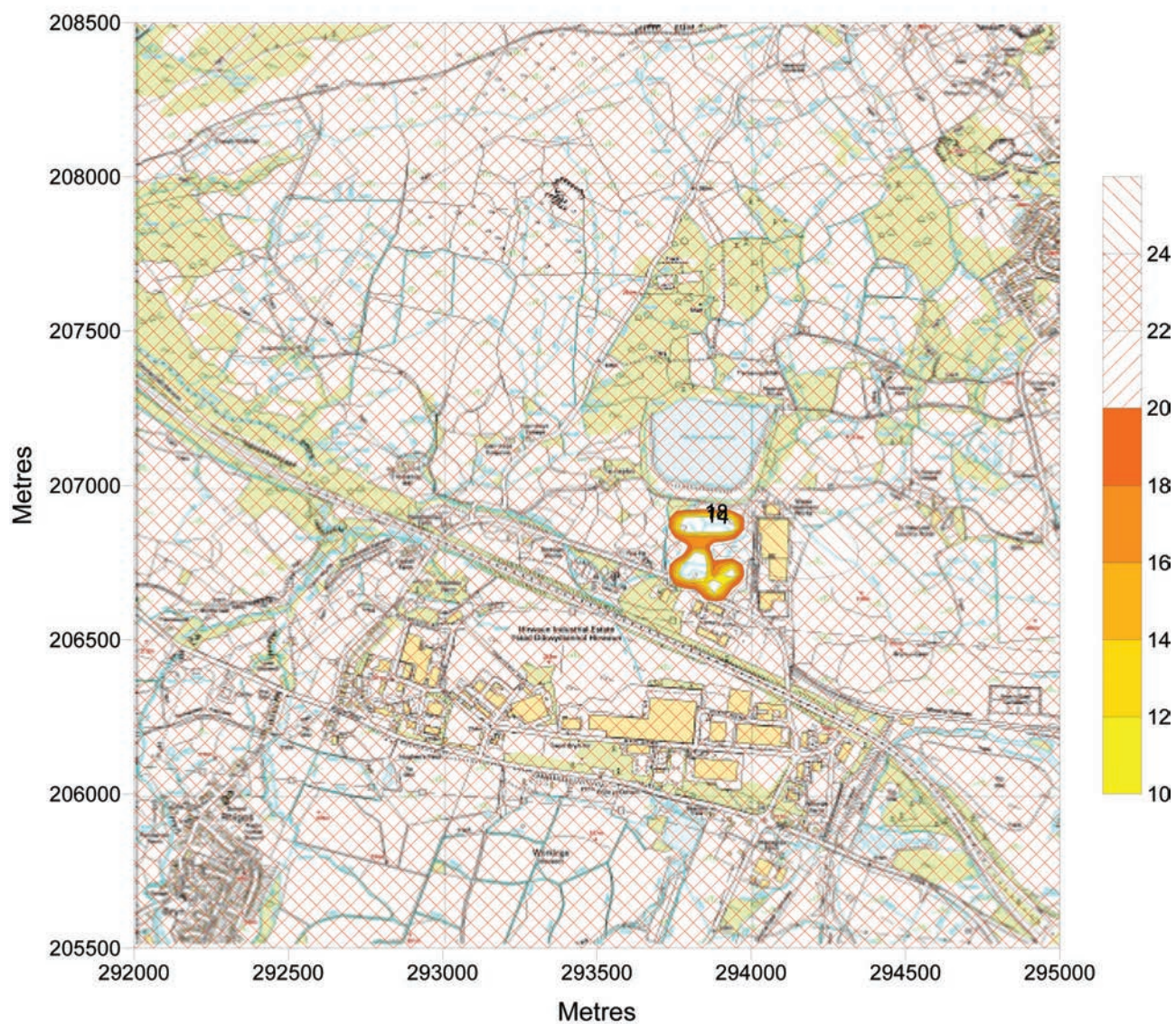


**Figure 8 Predicted Ground Level Concentration of Particulate Matter ( $\mu\text{g m}^{-3}$ )  
as an Annual Average**



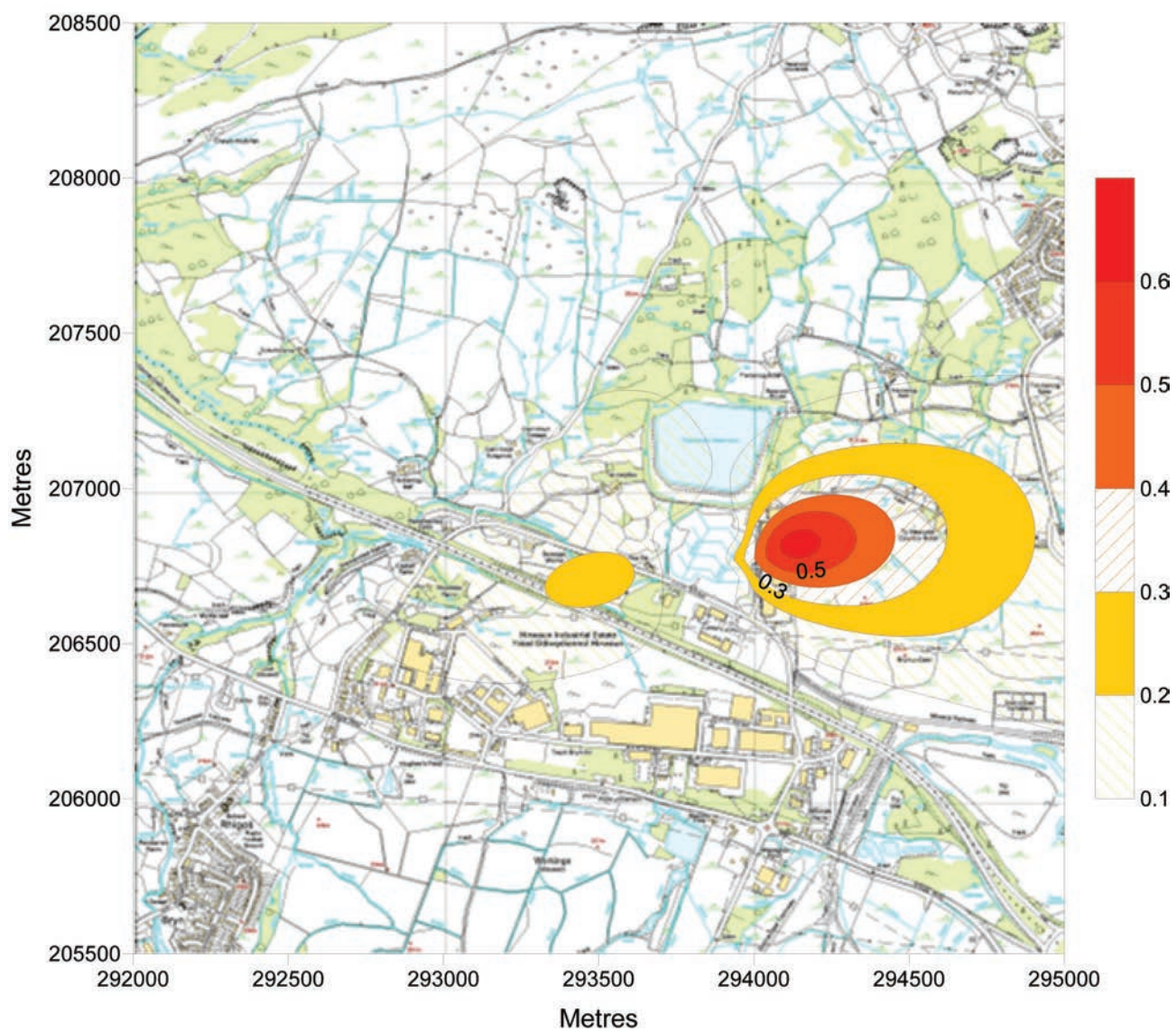


**Figure 9 Predicted Ground Level Concentration of Particulate Matter ( $\mu\text{g m}^{-3}$ )  
as a Daily Average Exceeded no More than 35 Times per Year**



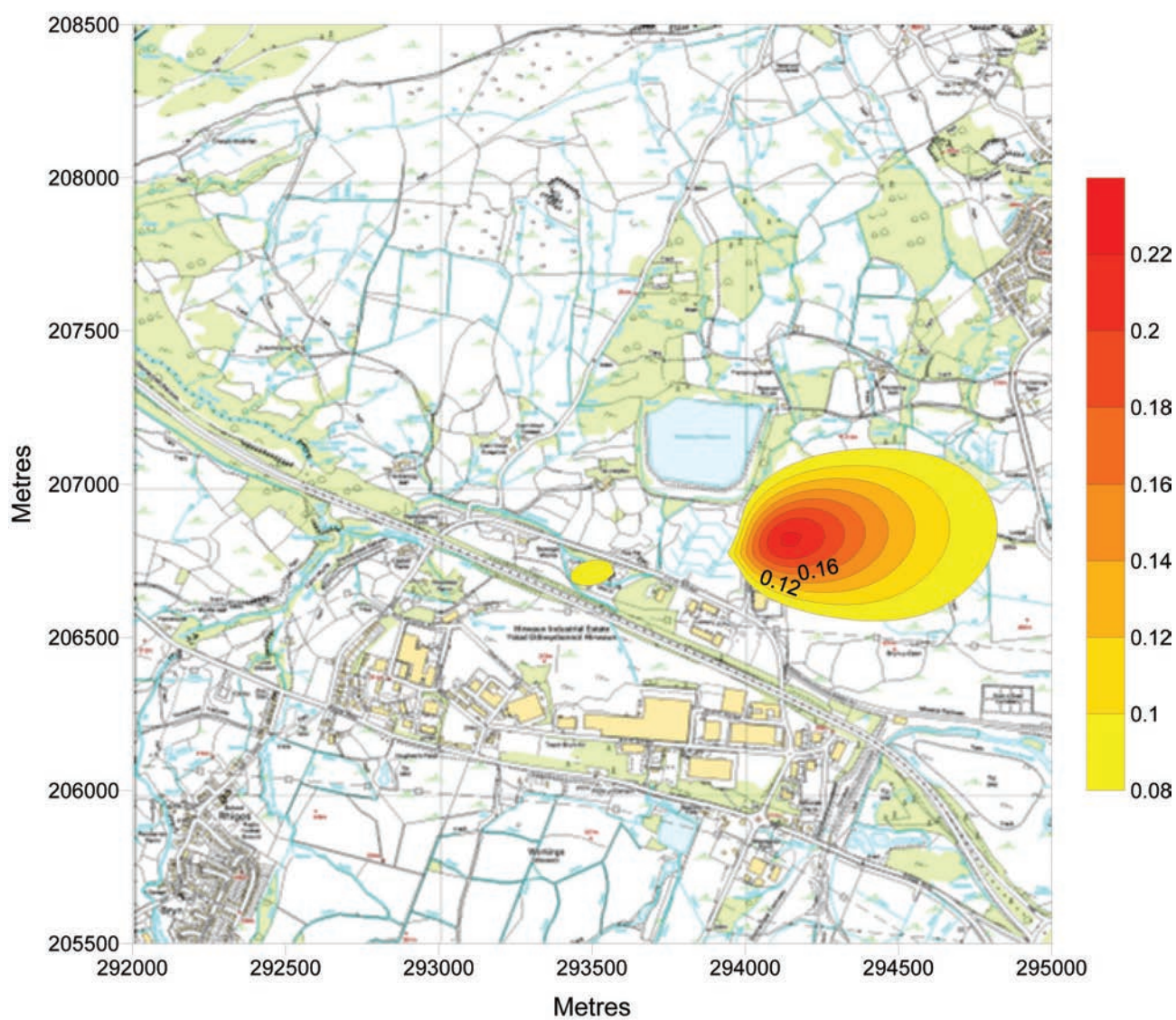


**Figure 10 Predicted Contribution to Ground Level Concentration of Volatile Organic Compounds ( $\mu\text{g m}^{-3}$ ) as an Annual Average**

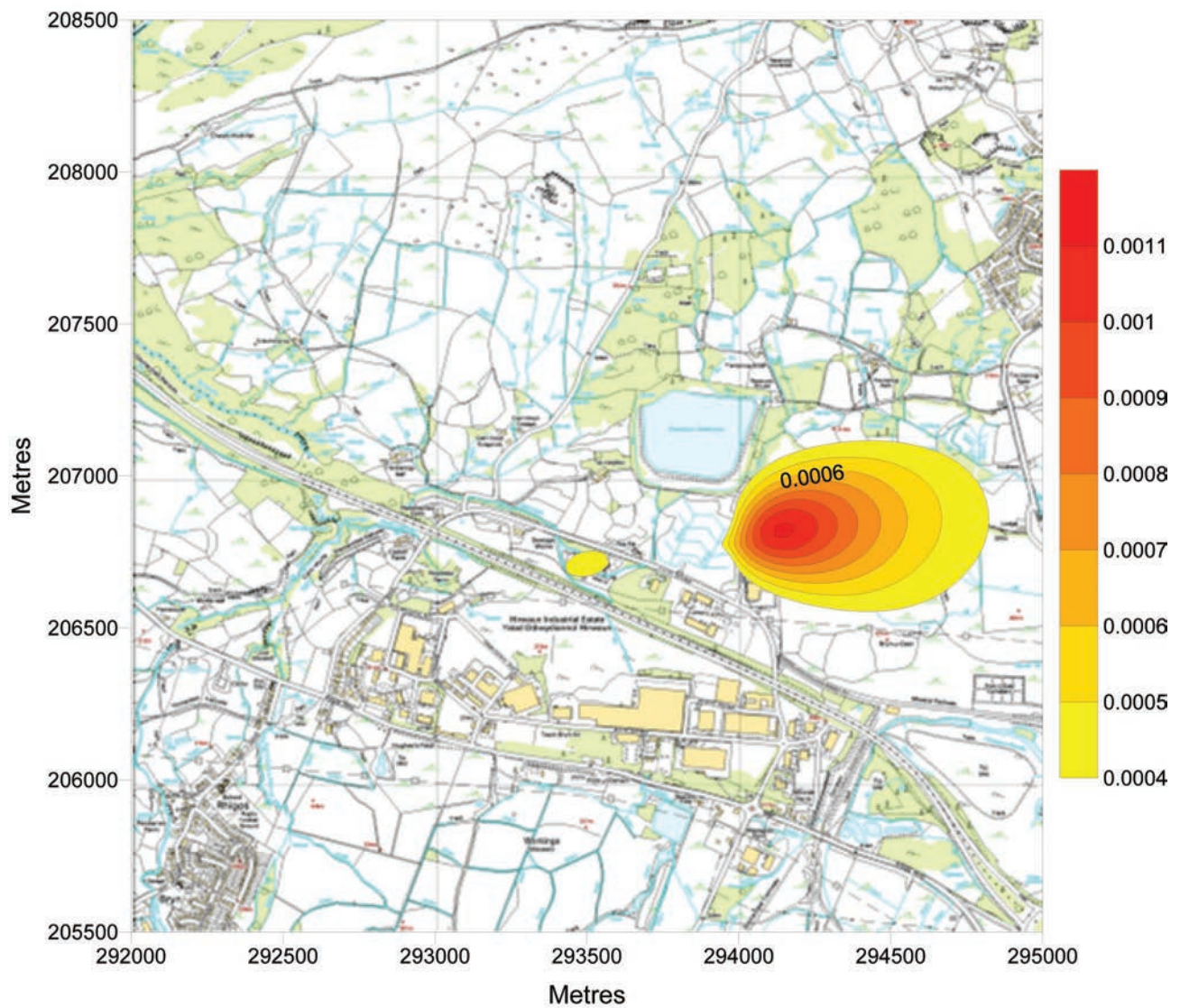




**Figure 11 Predicted Contribution to Ground Level Concentration of Hydrogen Chloride ( $\mu\text{g m}^{-3}$ ) as an Annual Average**

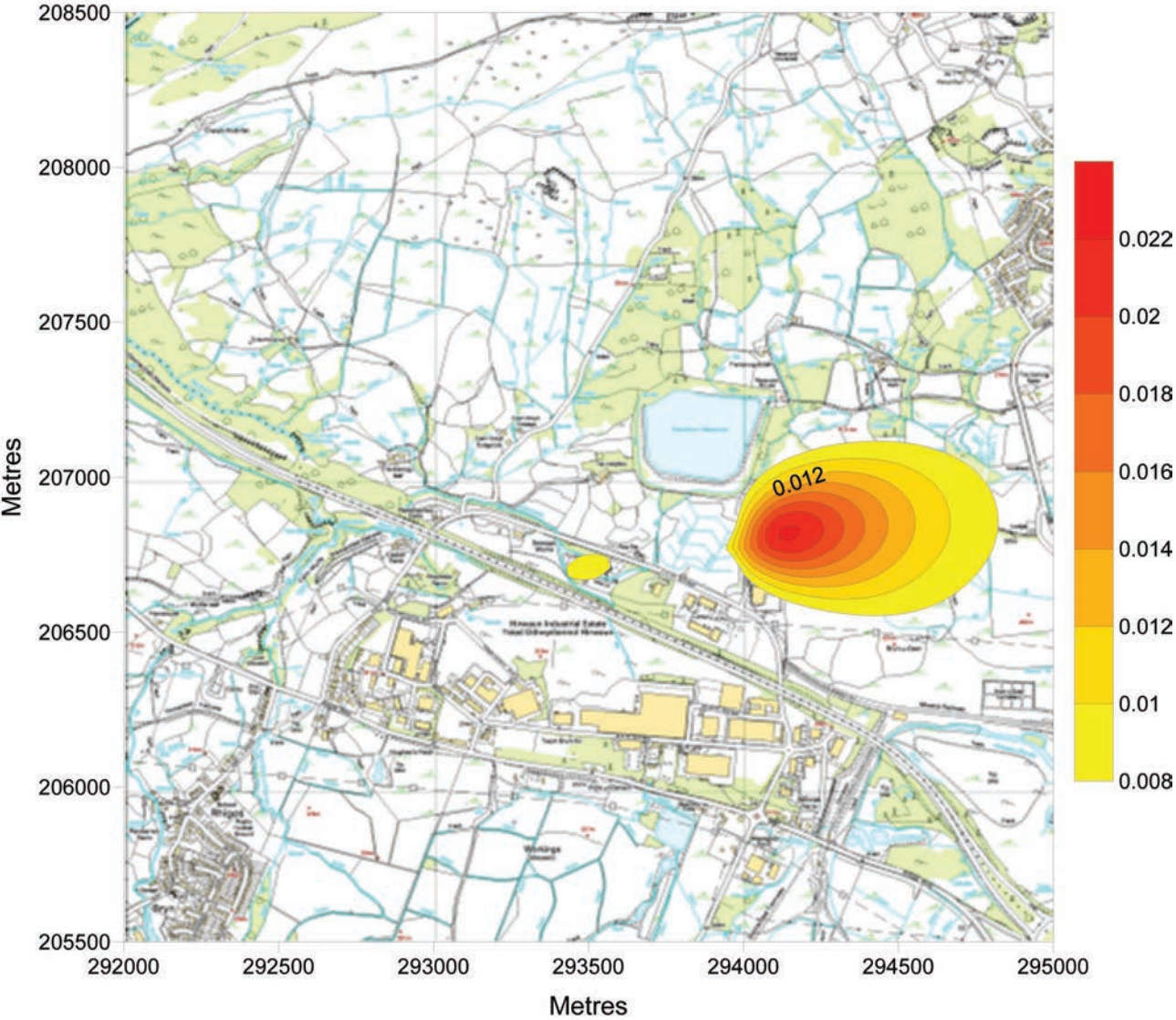


**Figure 13 Predicted Contribution to Ground Level Concentrations of Mercury ( $\mu\text{g m}^{-3}$ ) as an Annual Average**

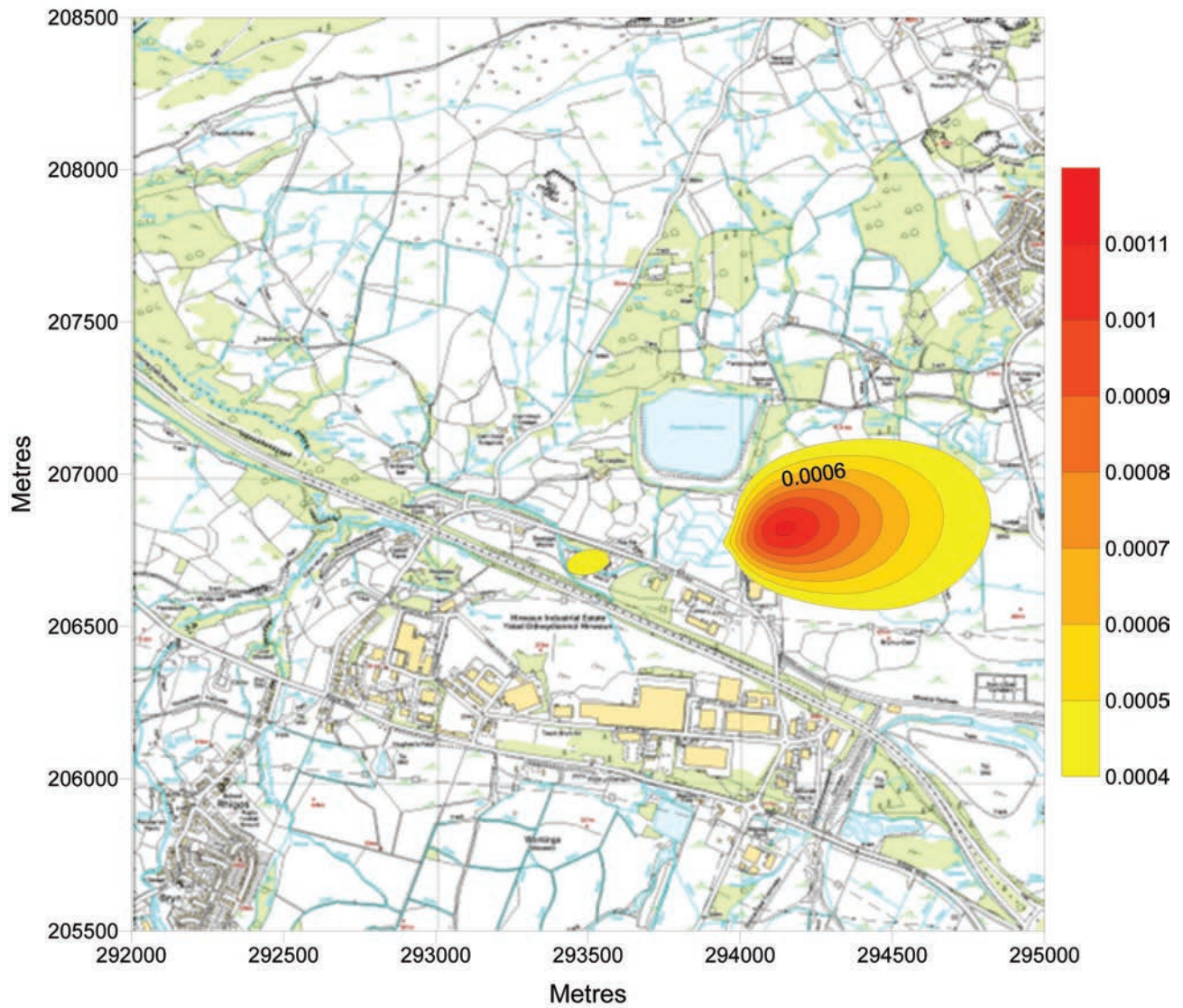




**Figure 12 Predicted Contribution to Ground Level Concentration of Hydrogen Fluoride (ug m-3) as an Annual Average**



**Figure 14 Predicted Contribution to Ground Level Concentrations of Cadmium and Thallium ( $\mu\text{g m}^{-3}$ ) as an Annual Average**





**Figure 15 Predicted Contribution to Ground Level Concentrations of Arsenic, Chromium, Cobalt, Copper, Manganese, Nickel, Lead, Antimony and Vanadium ( $\mu\text{g m}^{-3}$ ) as an Annual Average**

